



Dear Councillor

PLANNING COMMITTEE – WEDNESDAY 20TH MAY 2020

Please find attached the following presentations:

Presentation - 19/P/01913 - Drift Barn, The Drift, East Horsley, KT24 6NU (Pages 1 - 14)

**Presentation - 19/P/01980 - Land off Westwood Lane, Wanborough, Guildford
(Pages 15 - 34)**

**Presentation - 20/P/00042 - Livery Cottage, Horsham Road, Holmbury St Mary, Dorking,
RH5 6NH (Pages 35 - 56)**

Presentation - 20/P/00045 - 9 Greenside Close, Guildford, GU4 7EU (Pages 57 - 68)

**Presentation - 20/P/00176 - Pit Farm Tennis Club, Hillier Road, Guildford
(Pages 69 - 80)**

**Presentation - 20/P/00309 - Kings Yard, Burrows Lane, Shere, Guildford, GU5 9QE
(Pages 81 - 90)**

**Presentation - 20/P/00478 - Aldershot Road, Allotment Site, Woodside Road, Guildford
(Pages 91 - 104)**

Yours sincerely

Sophie Butcher, Democratic Services Officer
01483 444056
Encs

This page is intentionally left blank

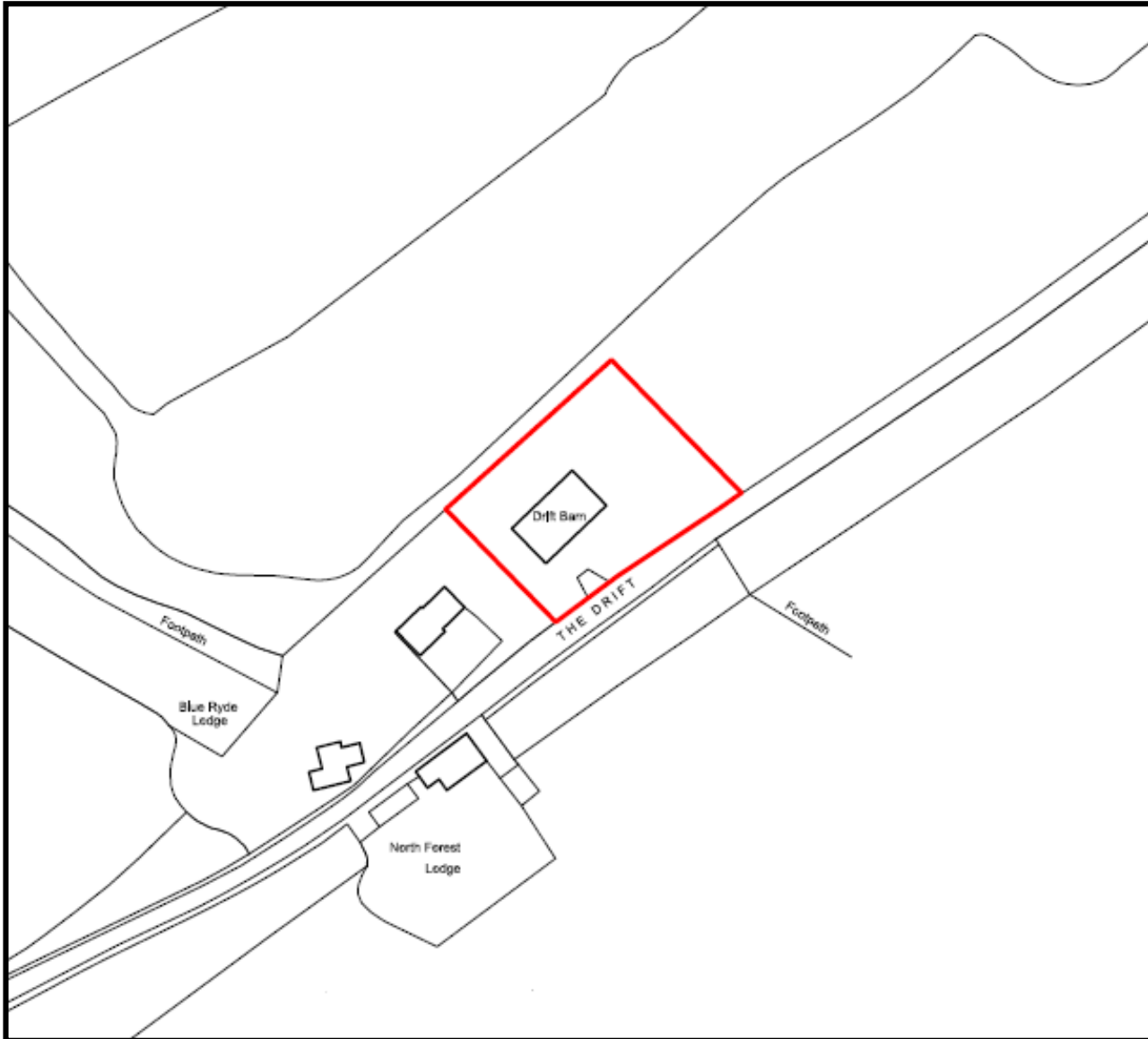
19/P/01913

**Drift Barn
The Drift
East Horsley**

[Previous](#)

[Next](#)

[Home](#)

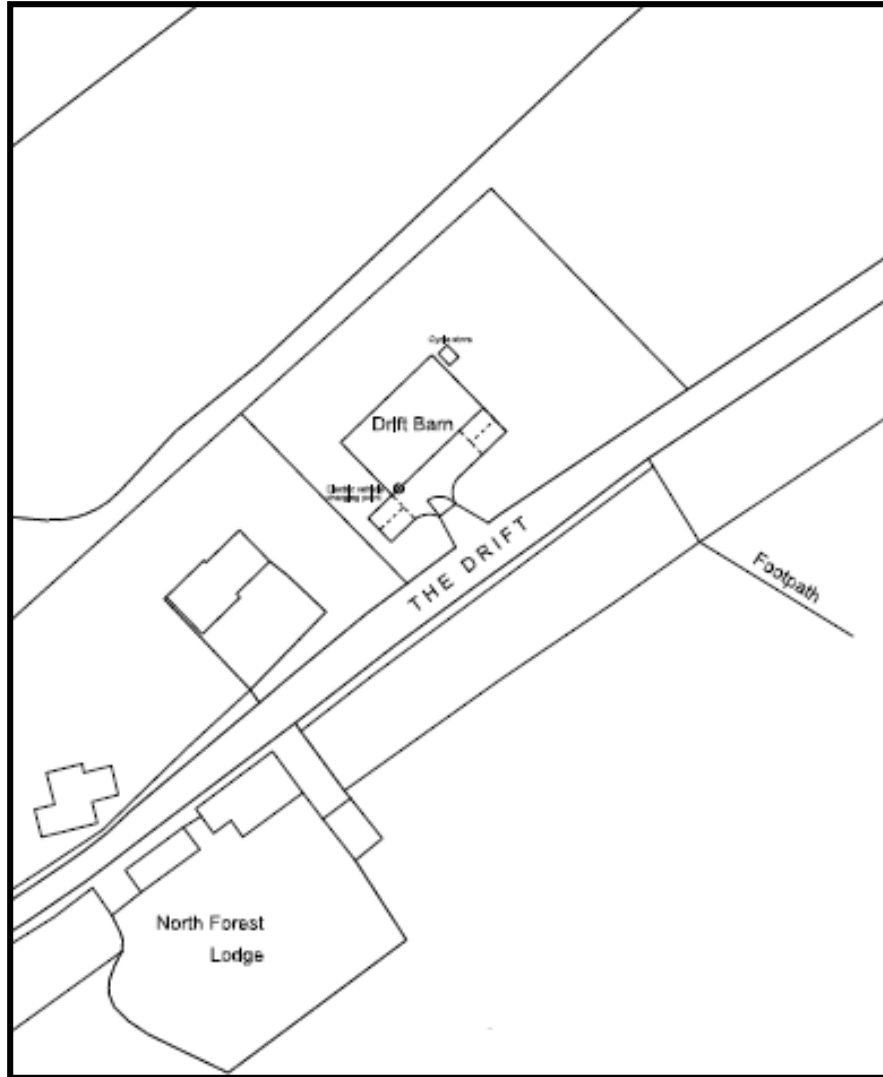


Site Location Plan

[Previous](#)

[Next](#)

[Home](#)

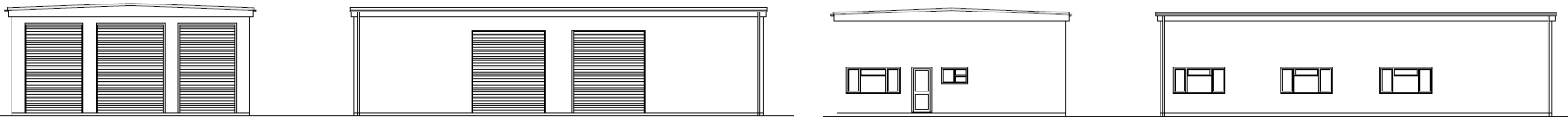


Proposed Block Plan

[Previous](#)

[Next](#)

[Home](#)



Existing Elevations (West, South, East and North Elevations)



Proposed Elevations (West, South, East and North Elevations)

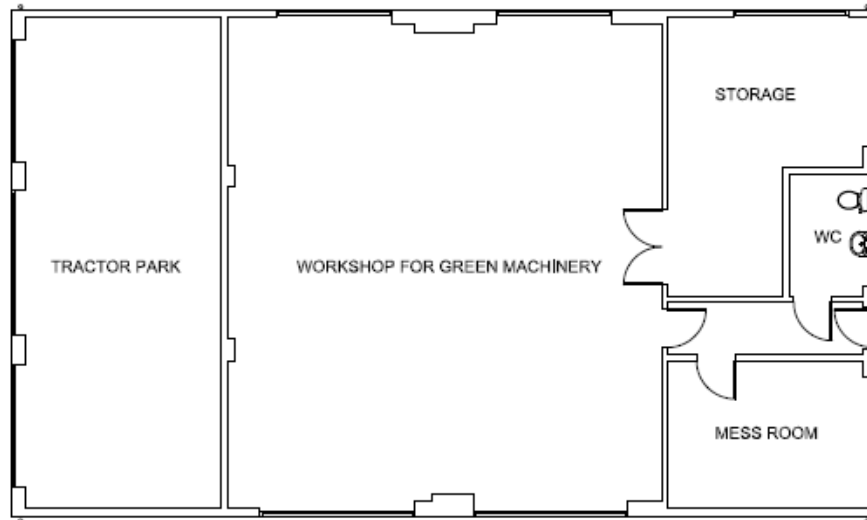
[Previous](#)

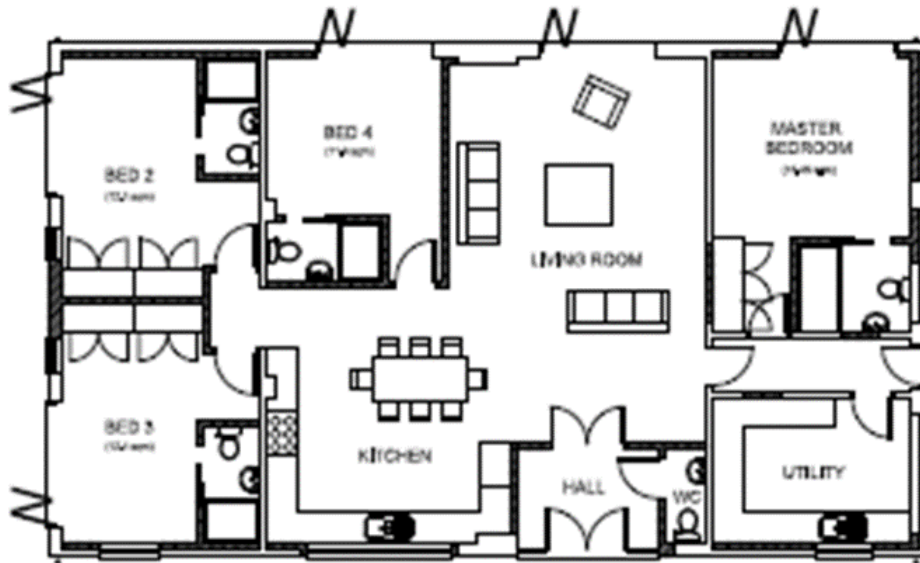
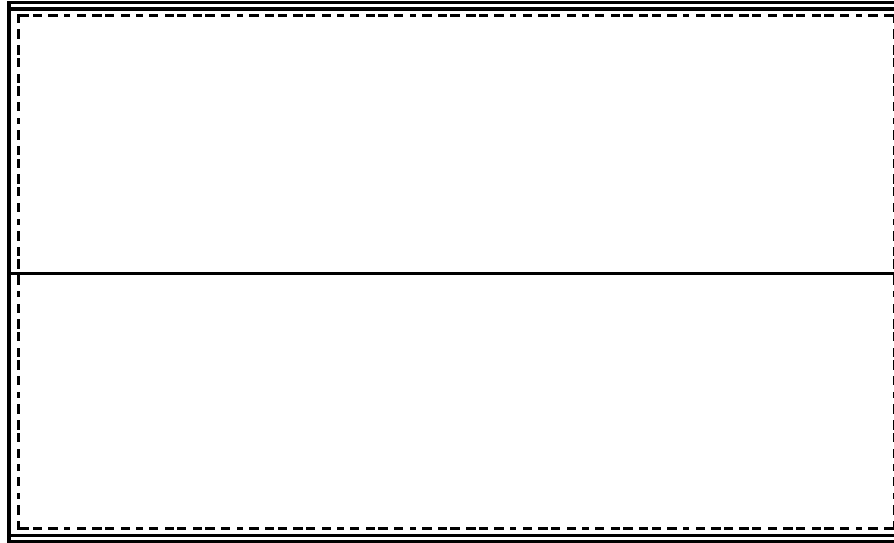
[Next](#)

[Home](#)



ROOF





Proposed Floor and Roof Plan

[Previous](#)

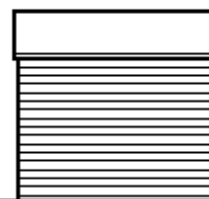
[Next](#)

[Home](#)

FELT COVERED ROOF
LOCKABLE LEDGED & BRACED DOOR
STAINED TIMBER BOARDING



2230



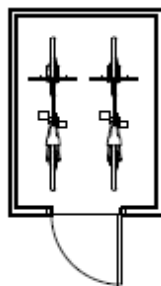
SIDE

FRONT

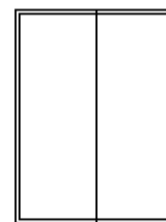
SIDE

REAR

1800



2400



CYCLE STORE

PLAN

ROOF

[Previous](#)

[Next](#)

[Home](#)



Front Elevation



[Previous](#)

[Next](#)

[Home](#)



Alternate views of the front elevation



[Previous](#)

[Next](#)

[Home](#)



East Side Elevation



[Previous](#)

[Next](#)

[Home](#)



View looking north west

[Previous](#)

[Next](#)

[Home](#)

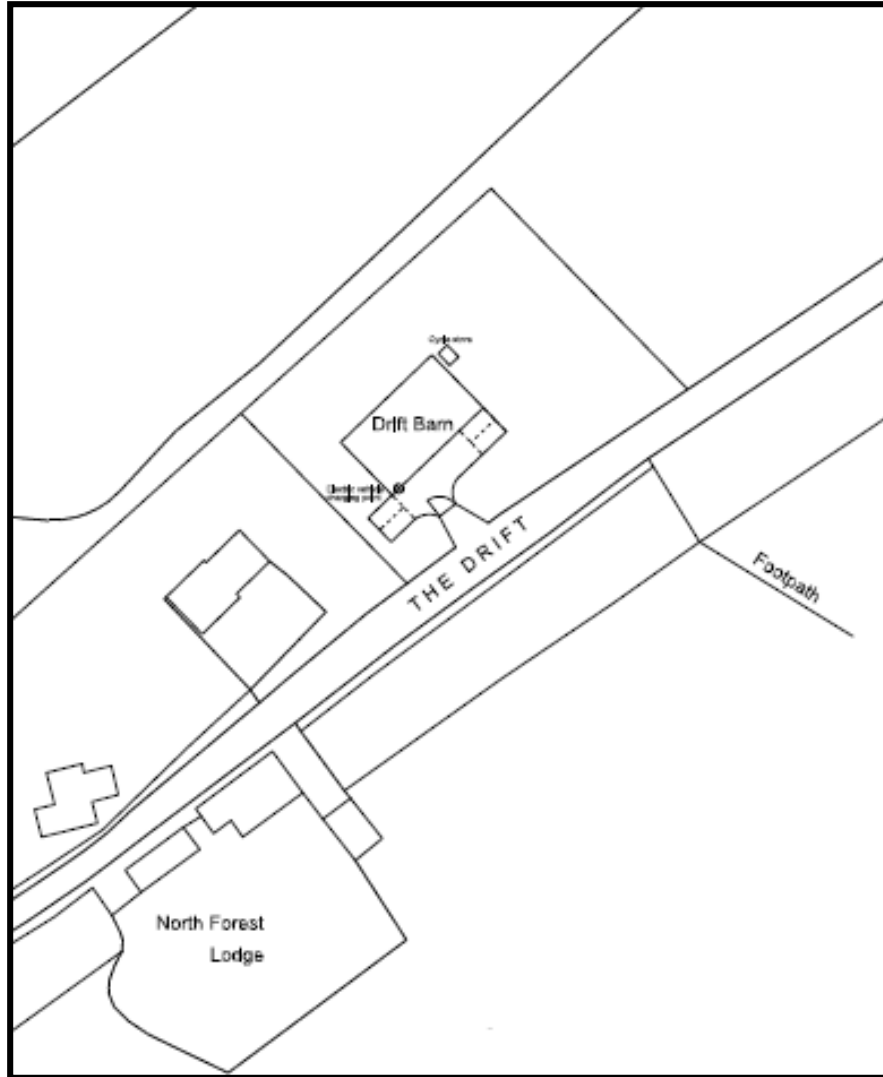


**View of neighbouring properties
LHS: The Studio, RHS: Blue Ryde Lodge (Listed building)**

[Previous](#)

[Next](#)

[Home](#)



Proposed Block Plan

[Previous](#)

[Next](#)

[Home](#)

This page is intentionally left blank

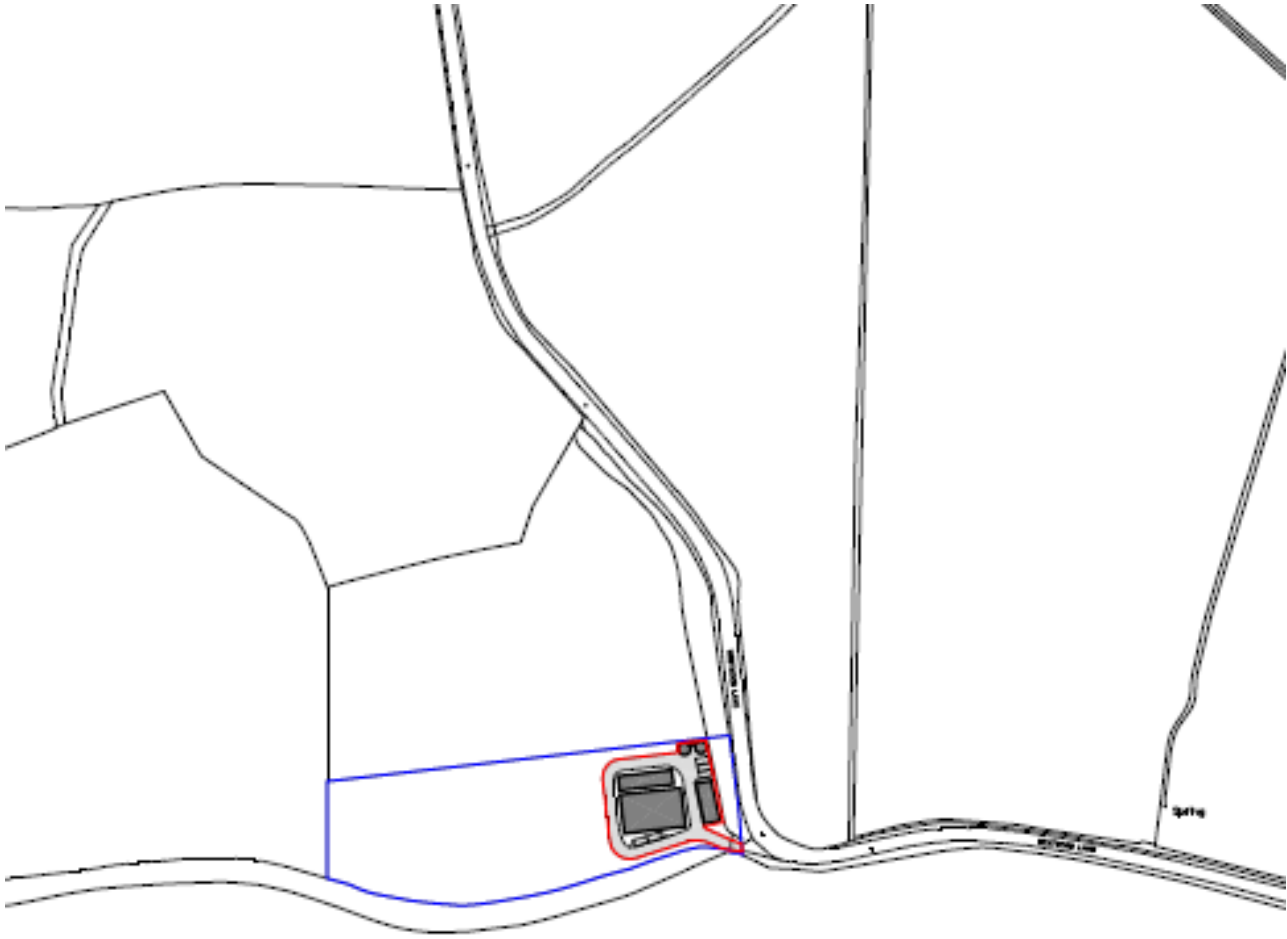
19/P/01980

**Land off Westwood Lane
Wanborough
Guildford**

[Previous](#)

[Next](#)

[Home](#)

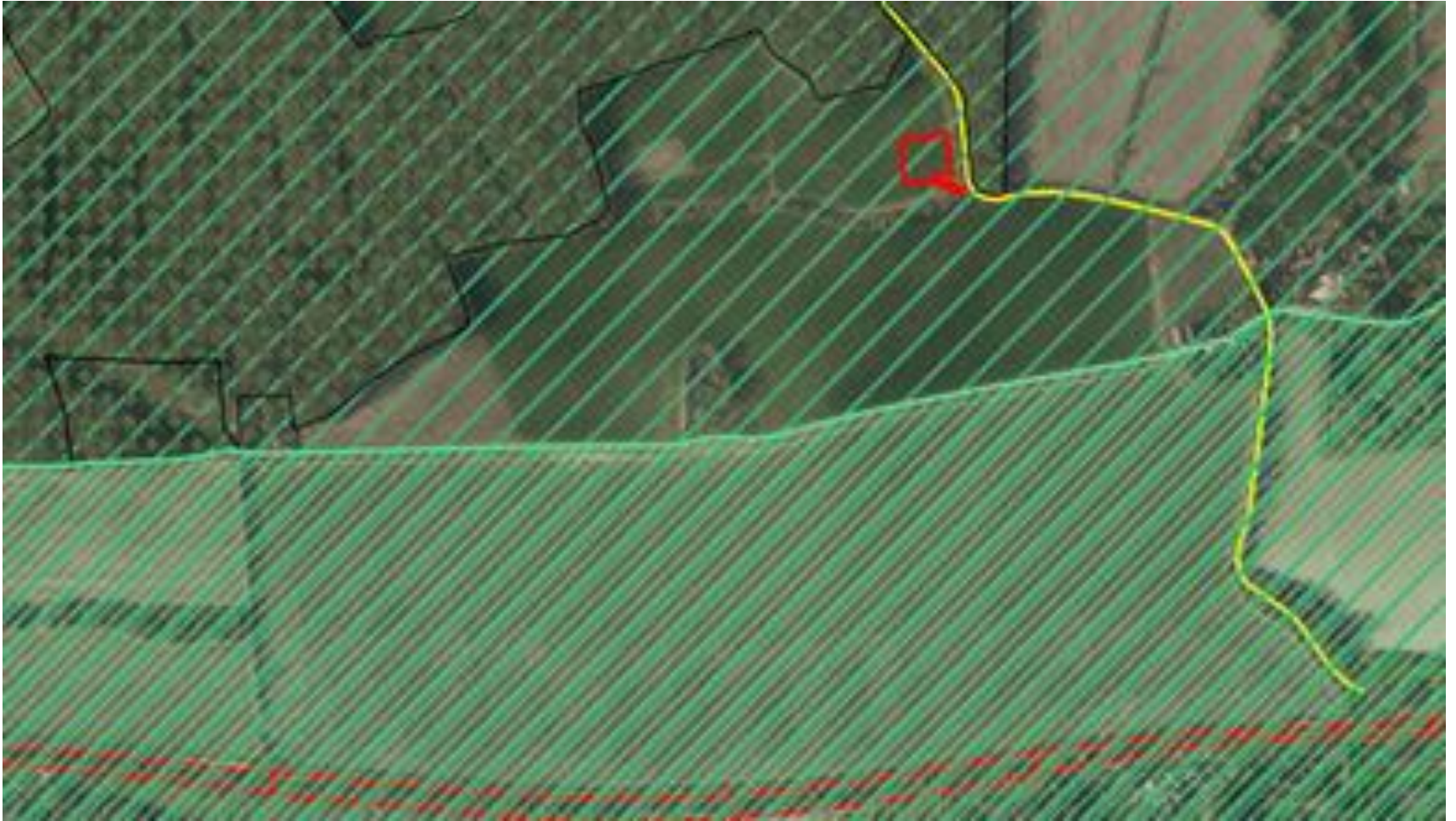


Site Location Plan

Previous

Next

Home

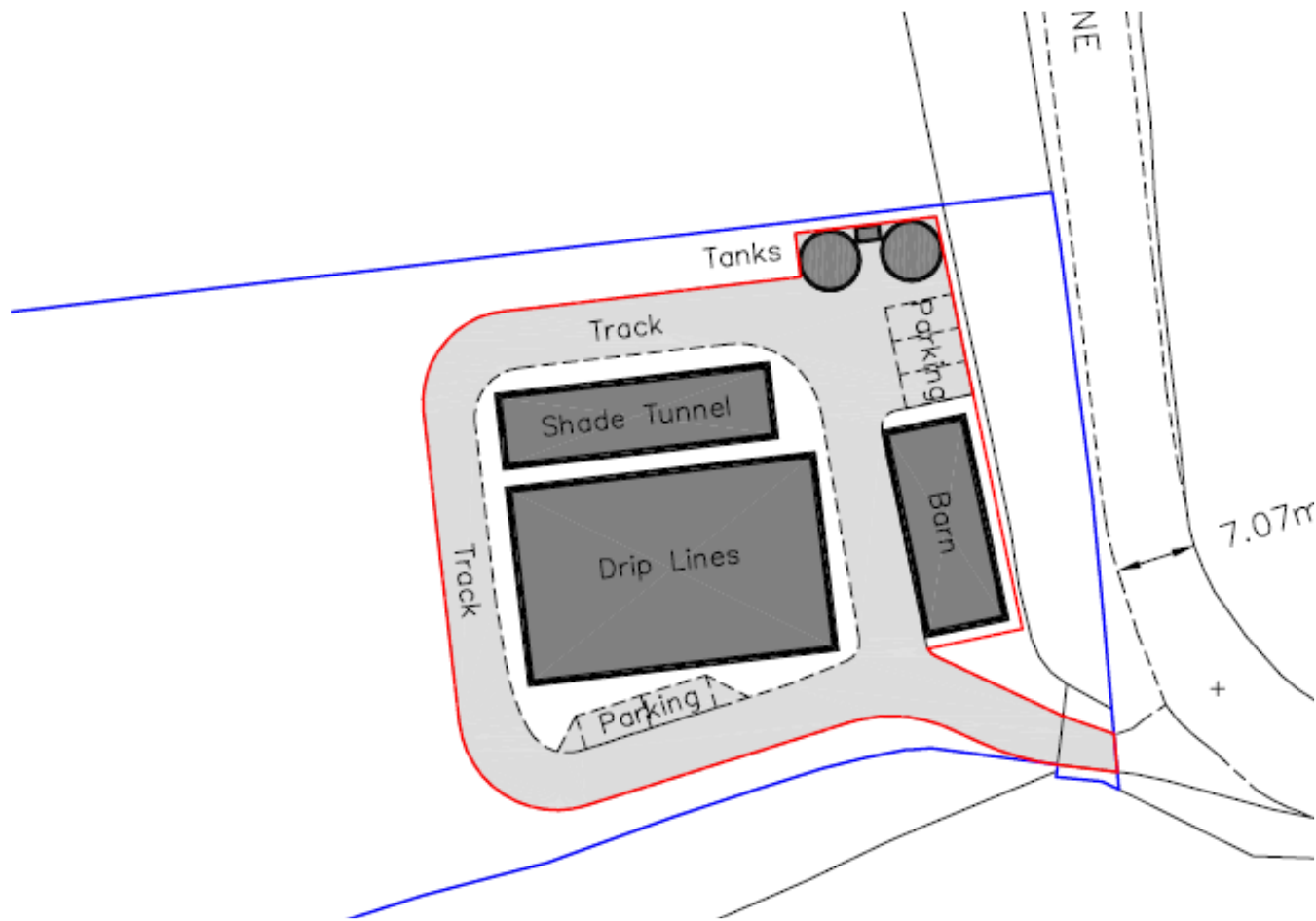


Ariel View

Previous

Next

Home

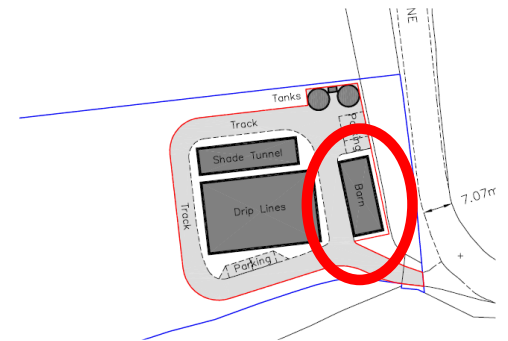
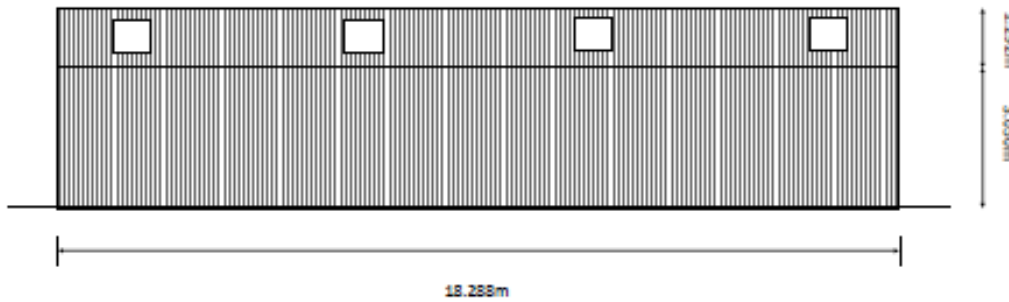
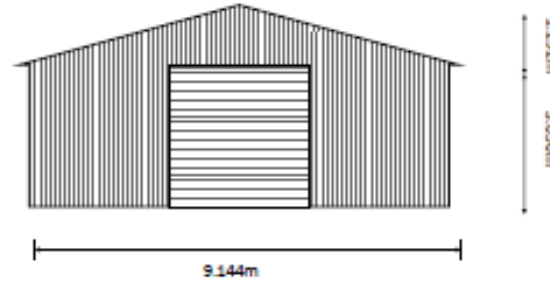
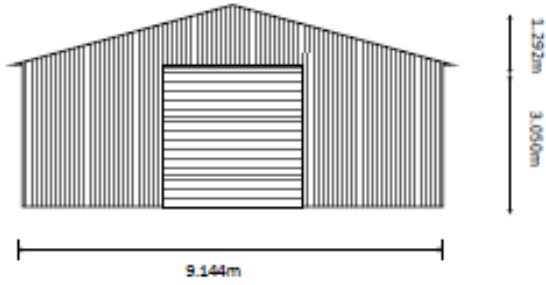


Block Plan

[Previous](#)

[Next](#)

[Home](#)

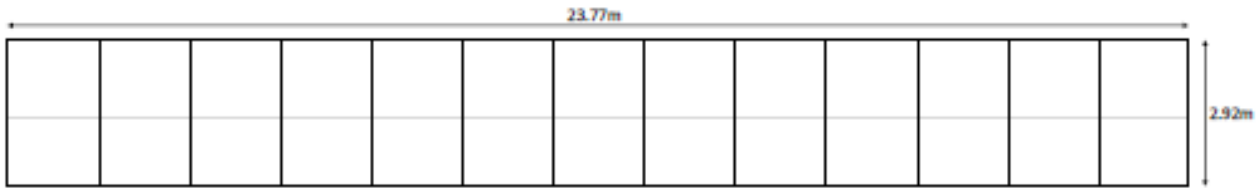


Nursery Barn

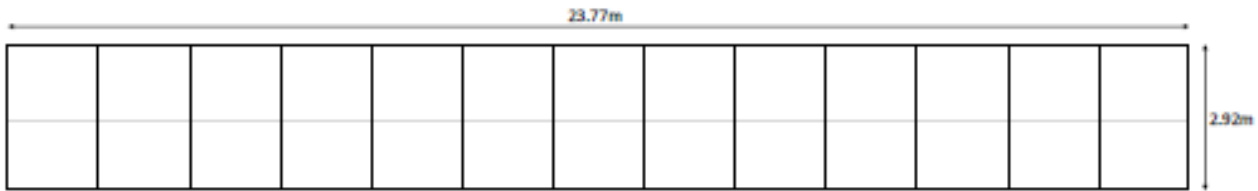
[Previous](#)

[Next](#)

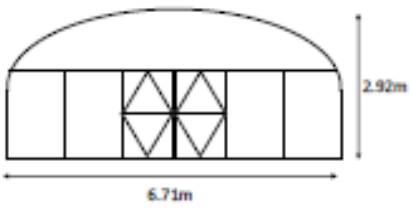
[Home](#)



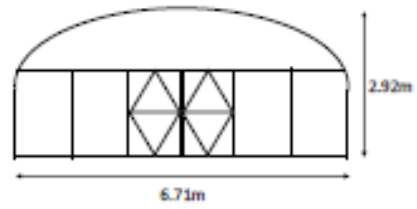
Side Elevation



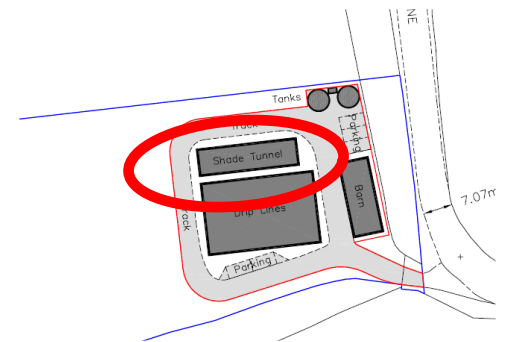
Side Elevation



End Elevation



End Elevation

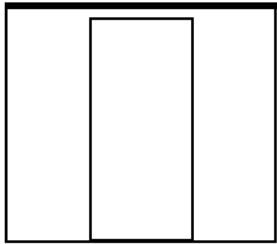


Shade Tunnel

[Previous](#)

[Next](#)

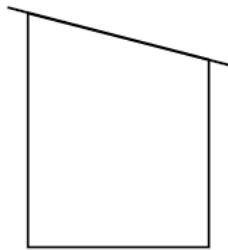
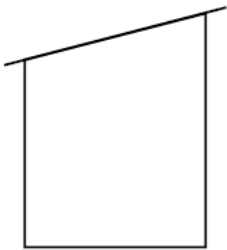
[Home](#)



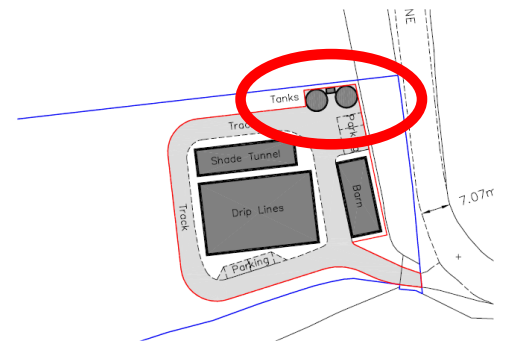
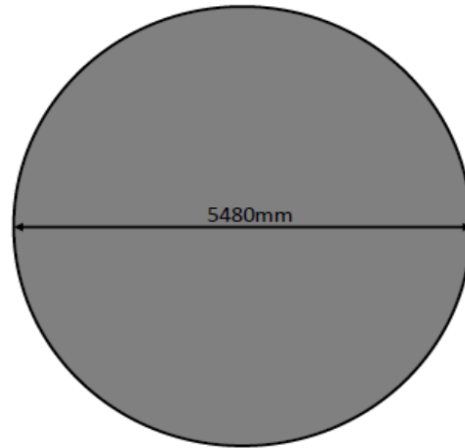
Front Elevation



Rear Elevation



Side Elevations

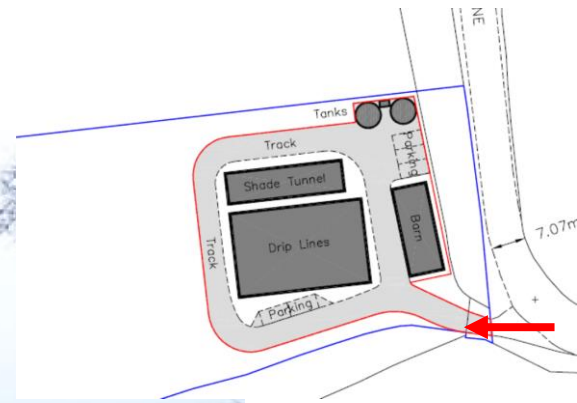


Pump Shed and water tank plans

[Previous](#)

[Next](#)

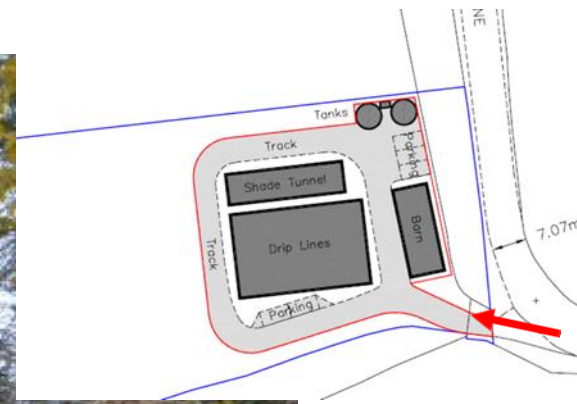
[Home](#)



[Previous](#)

[Next](#)

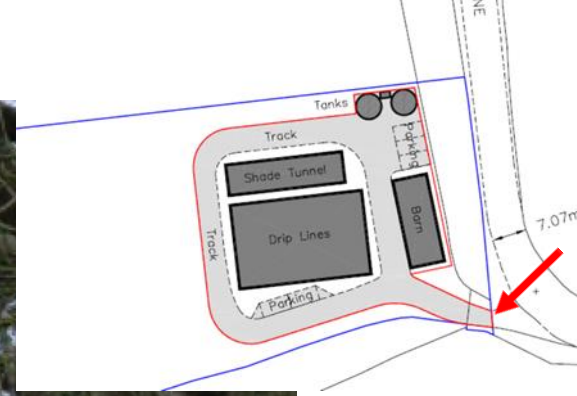
[Home](#)



[Previous](#)

[Next](#)

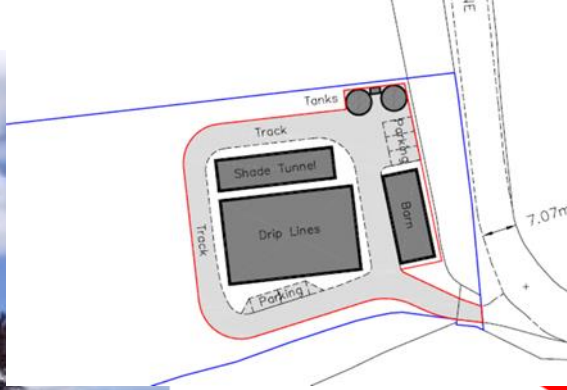
[Home](#)



[Previous](#)

[Next](#)

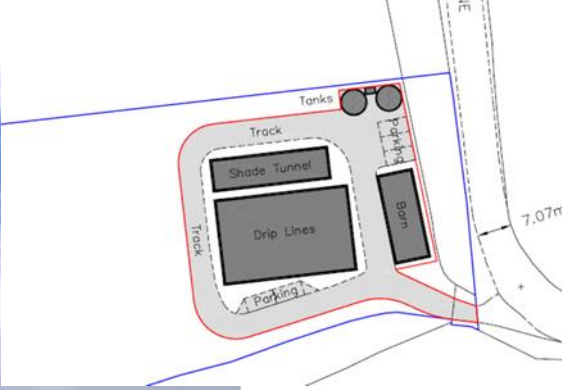
[Home](#)



[Previous](#)

[Next](#)

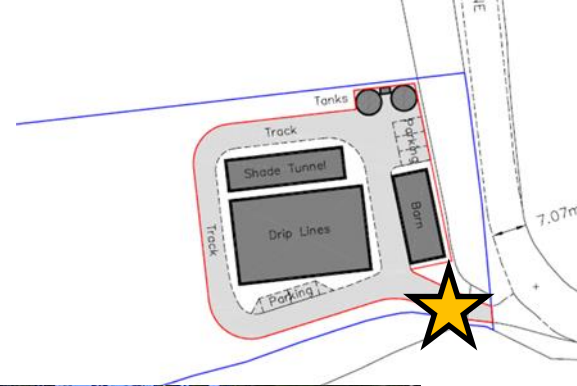
[Home](#)



[Previous](#)

[Next](#)

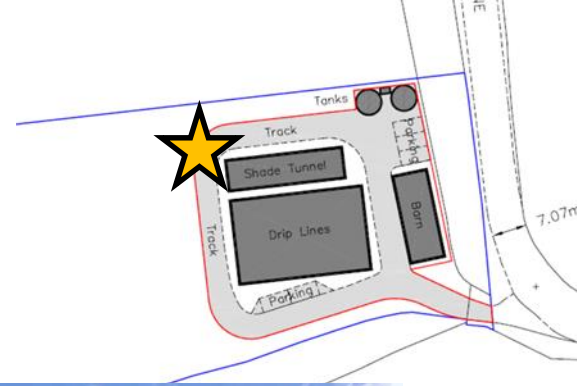
[Home](#)



[Previous](#)

[Next](#)

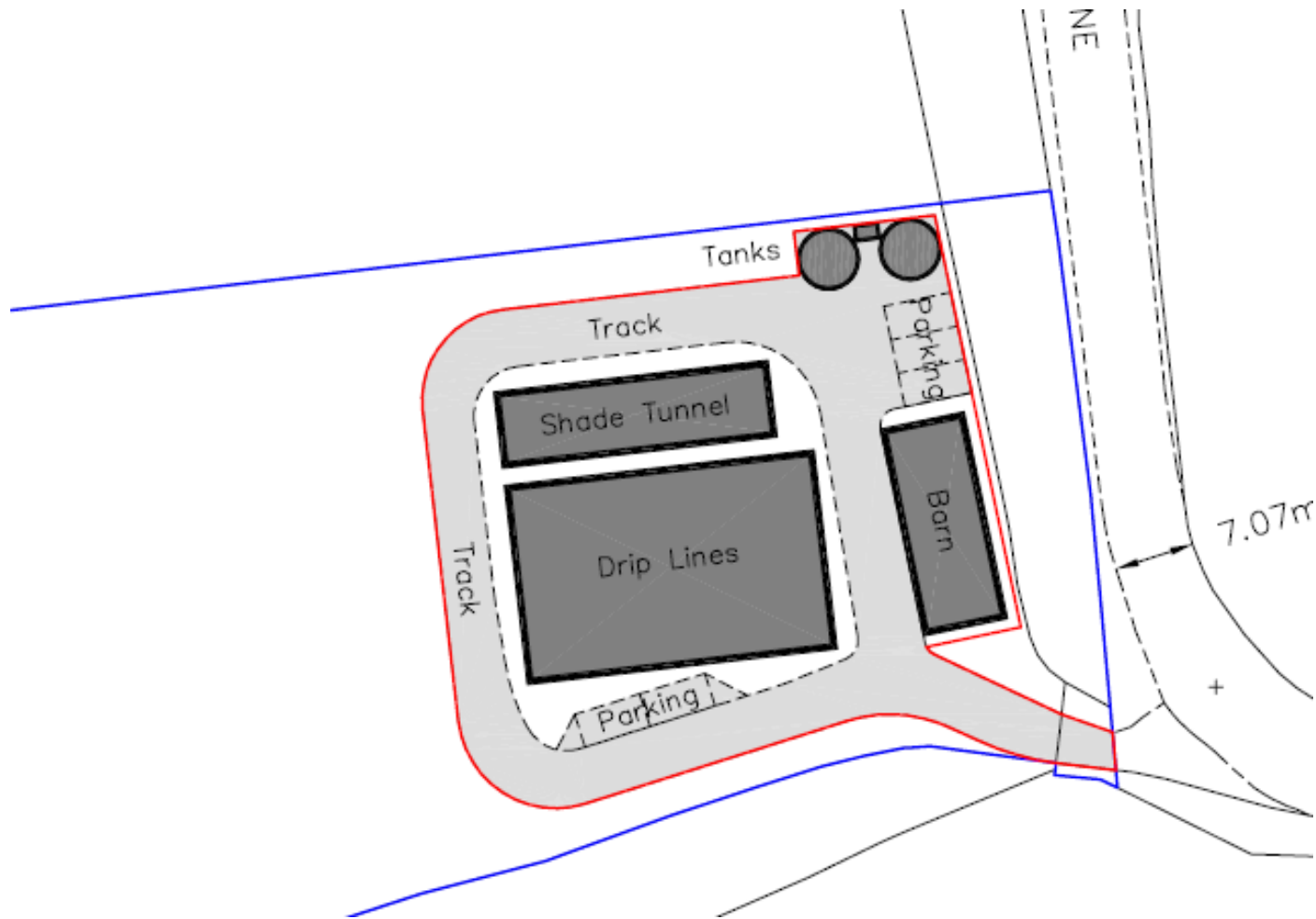
[Home](#)



[Previous](#)

[Next](#)

[Home](#)



Block Plan

[Previous](#)

[Next](#)

[Home](#)

End

[Previous](#)

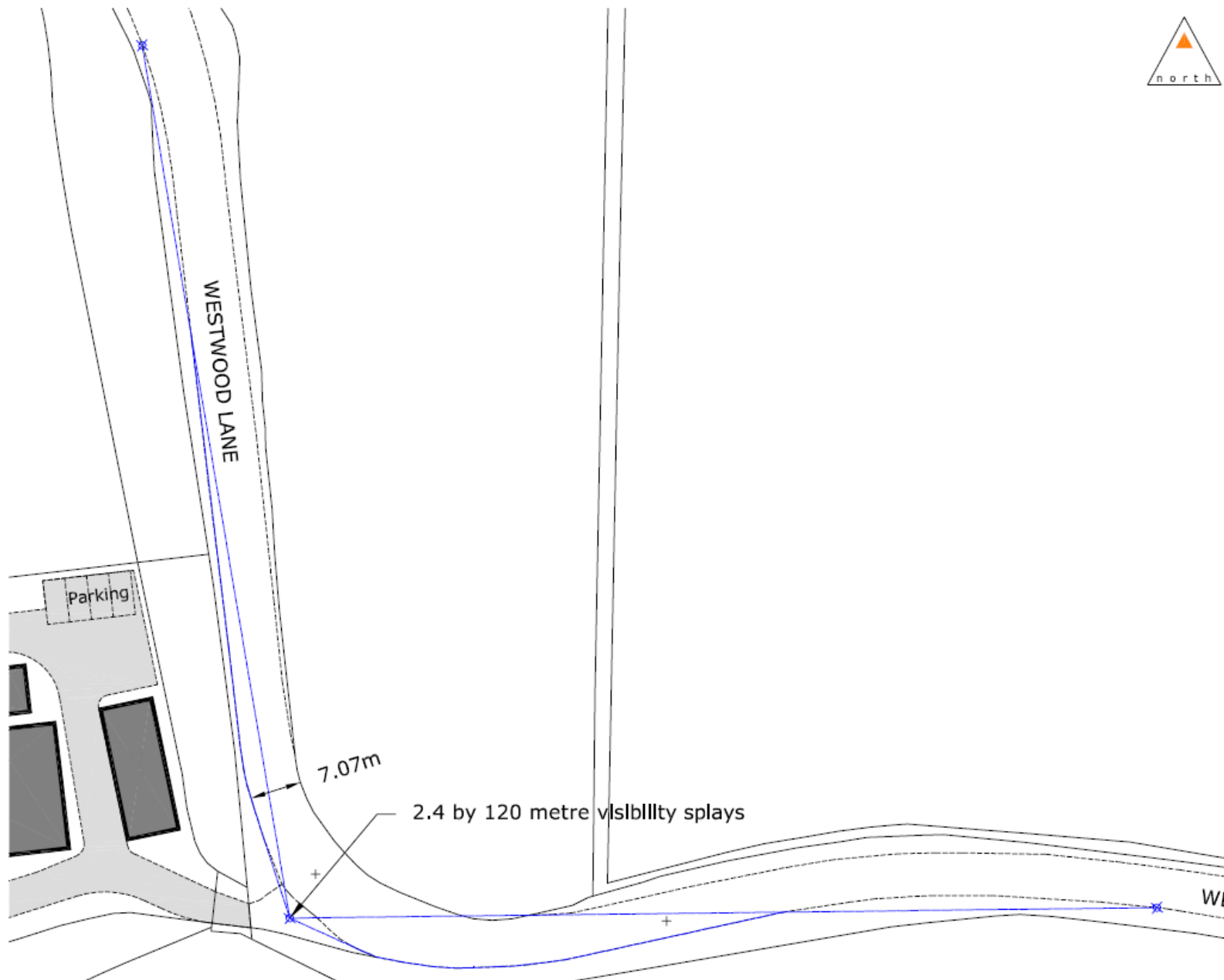
[Next](#)

[Home](#)

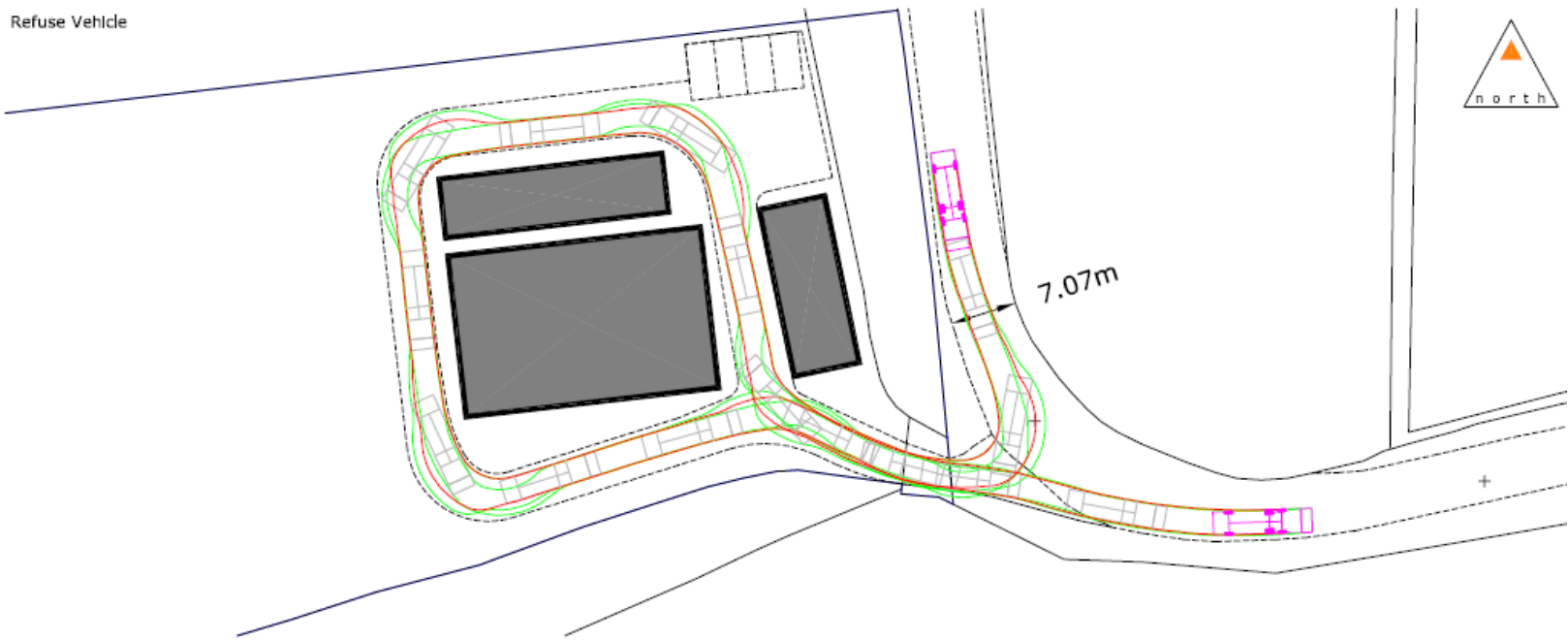
[Previous](#)

[Next](#)

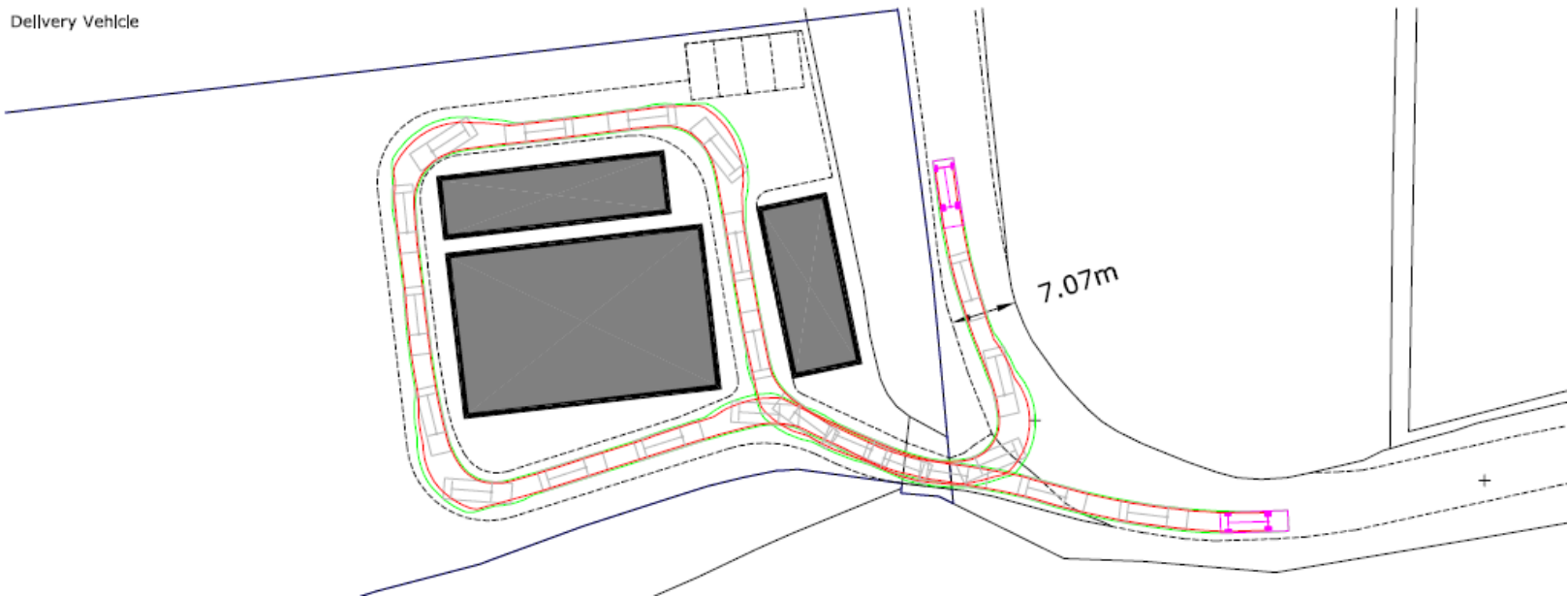
[Home](#)



Refuse Vehicle



Delivery Vehicle



Tracking plan within site

[Previous](#)

[Next](#)

[Home](#)

This page is intentionally left blank

20/P/00042

**Livery Cottage
Horsham Road
Holmbury St Mary**

[Previous](#)

[Next](#)

[Home](#)

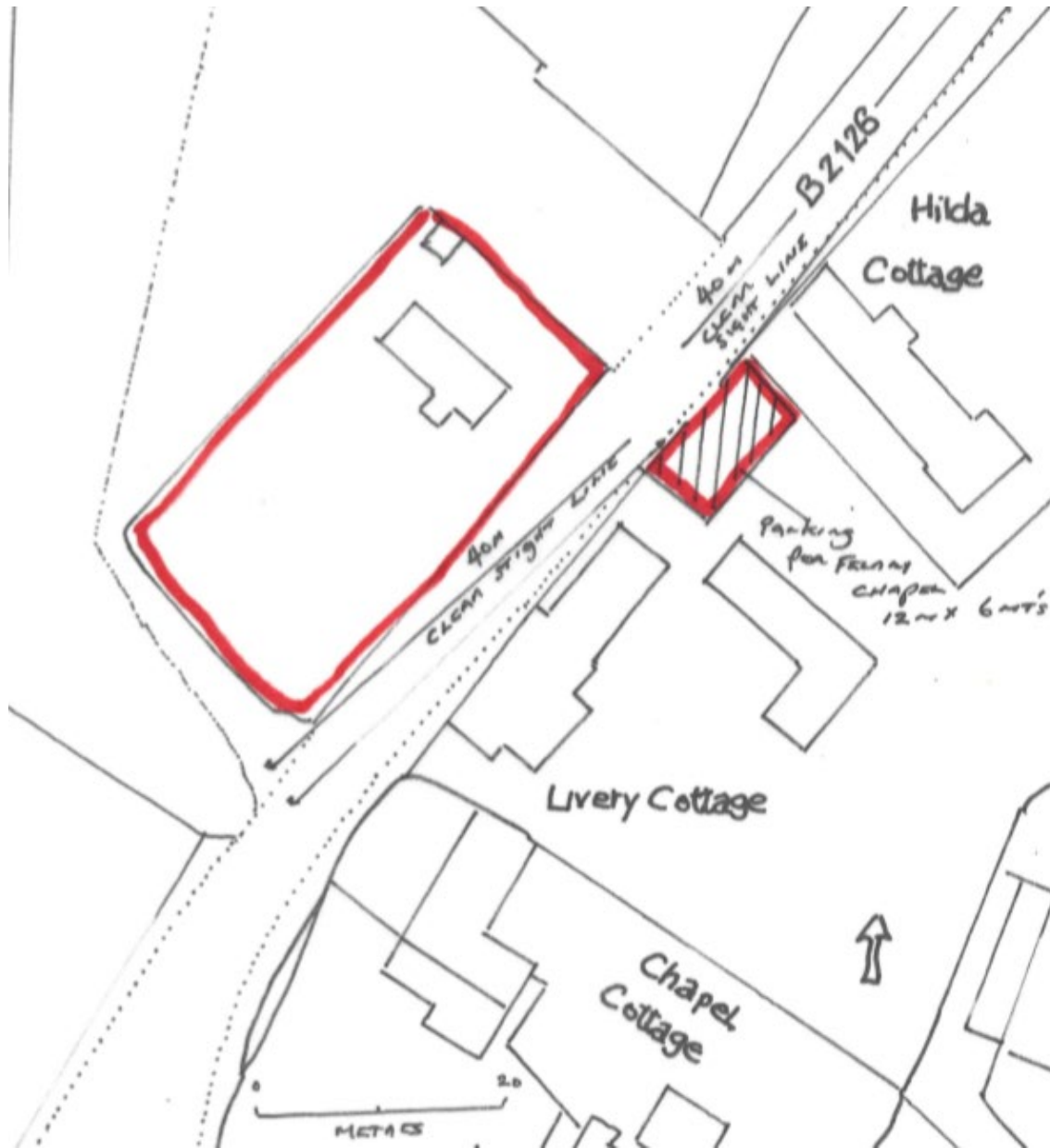


Site Location Plan

[Previous](#)

[Next](#)

[Home](#)



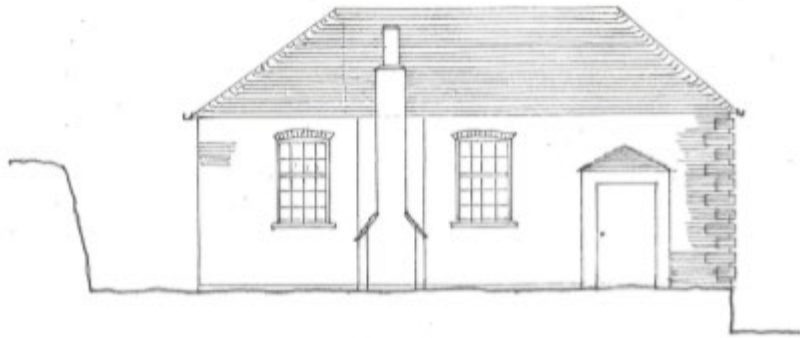


Aerial image of the site and surroundings

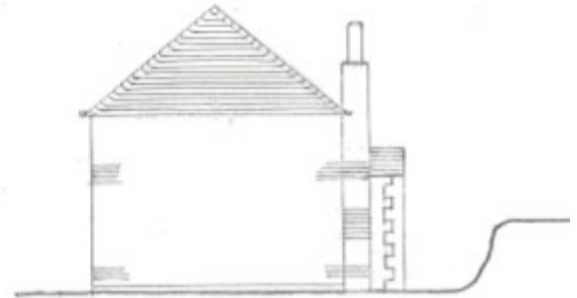
[Previous](#)

[Next](#)

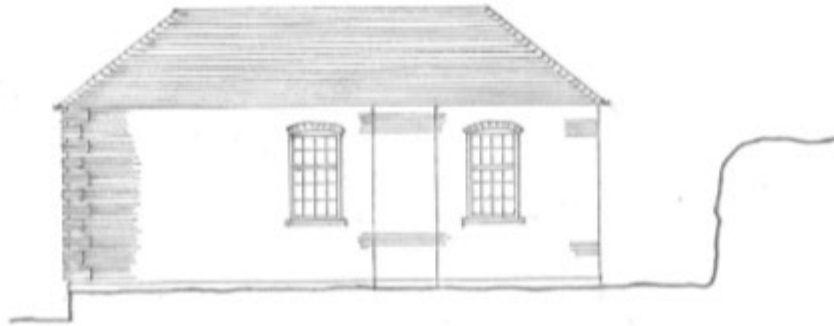
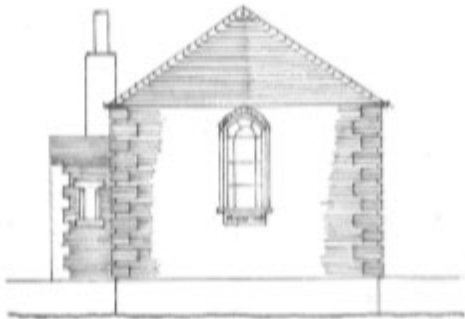
[Home](#)



SOUTH WEST ELEVATION



NORTH WEST ELEVATION

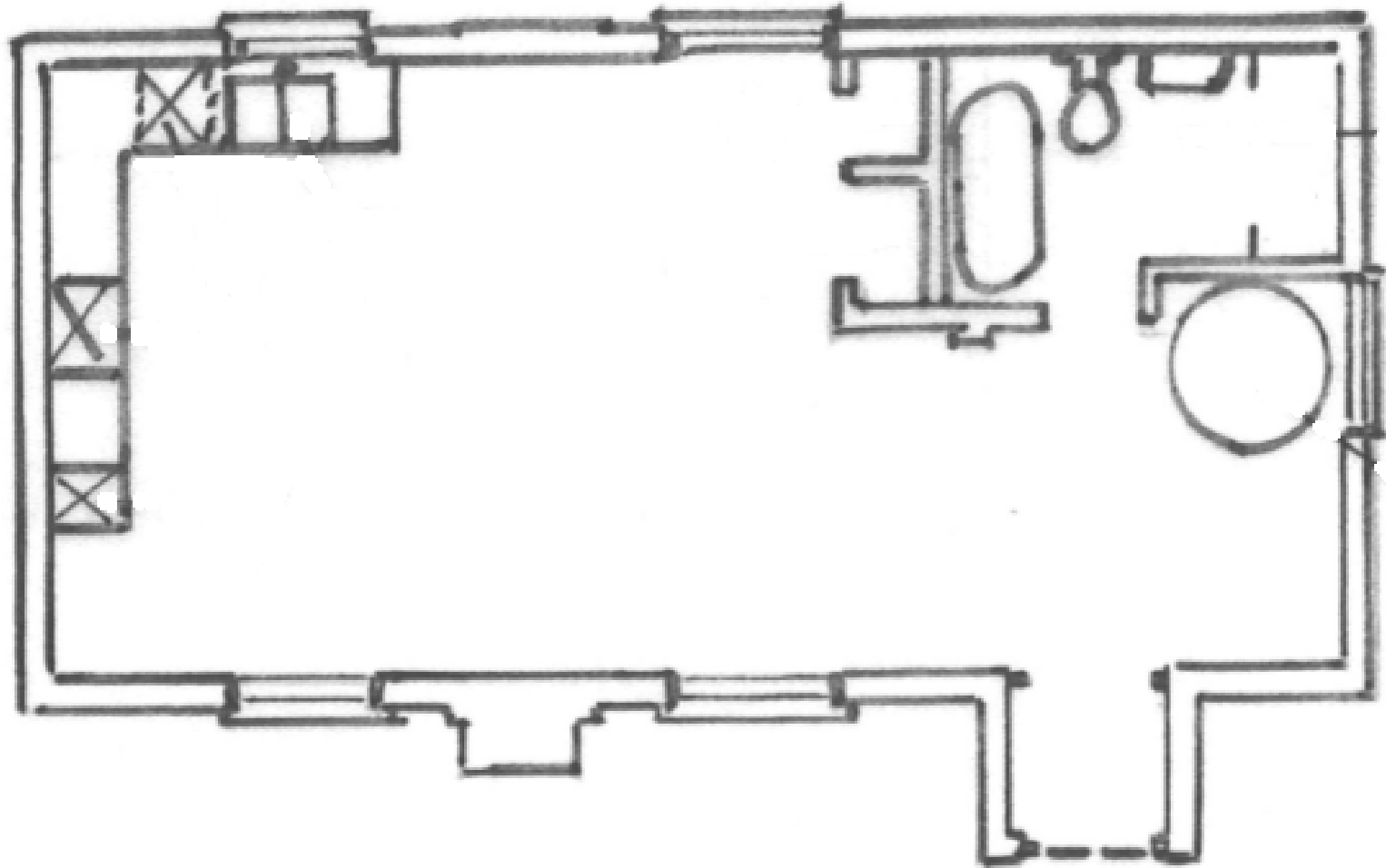


Felday Chapel Elevations

[Previous](#)

[Next](#)

[Home](#)

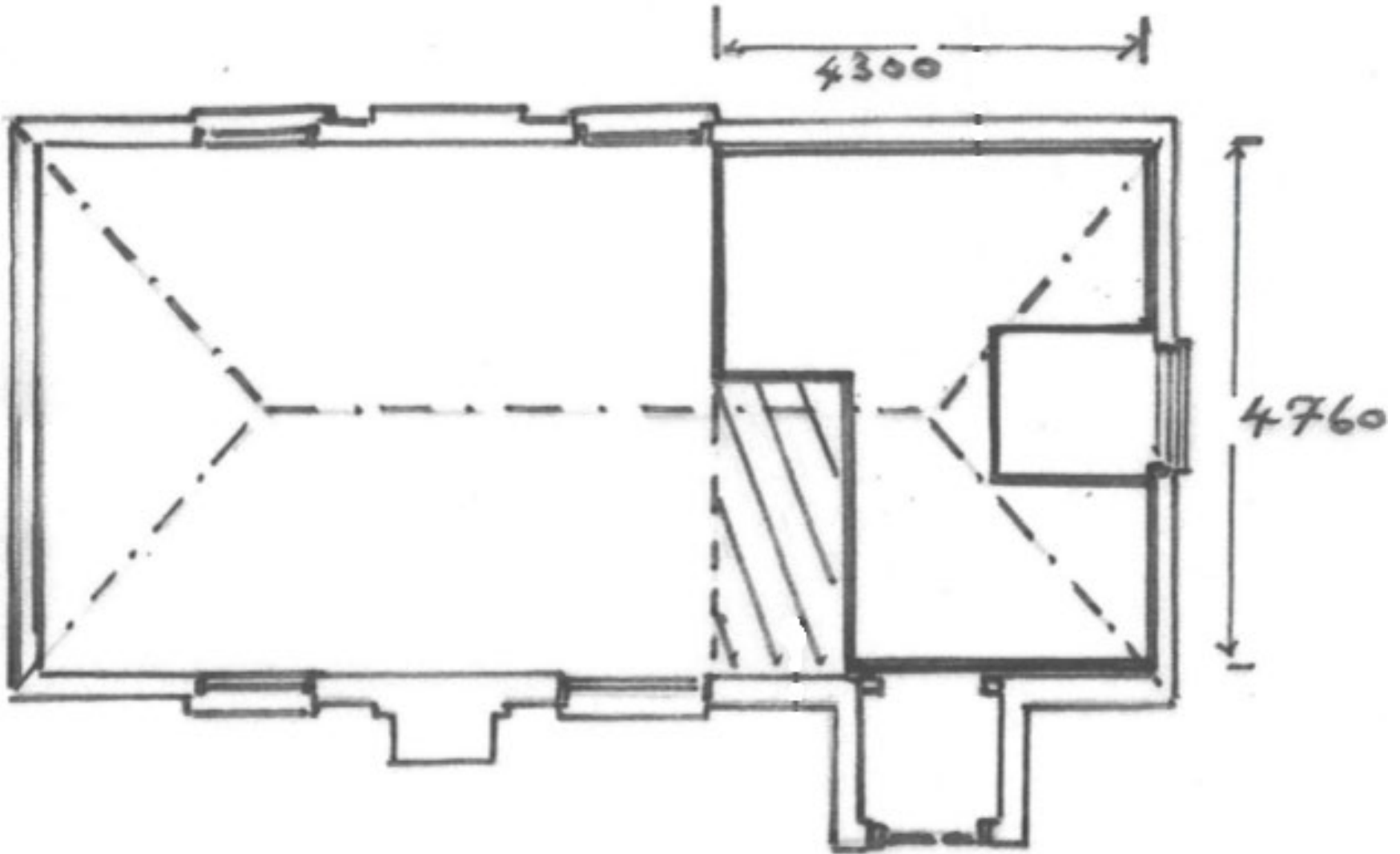


Existing Ground Floor

[Previous](#)

[Next](#)

[Home](#)

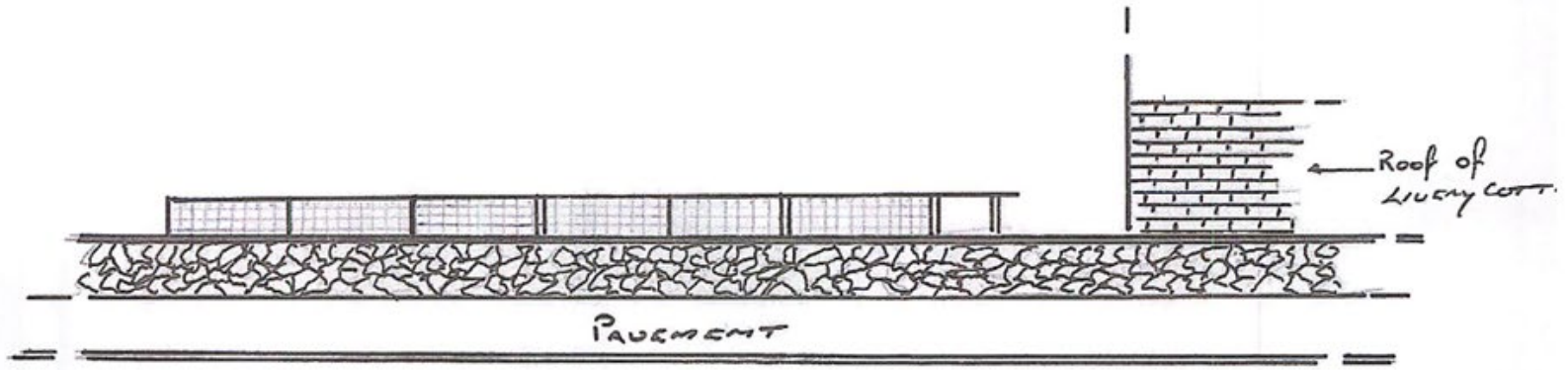


Existing/Proposed Mezzanine Floor

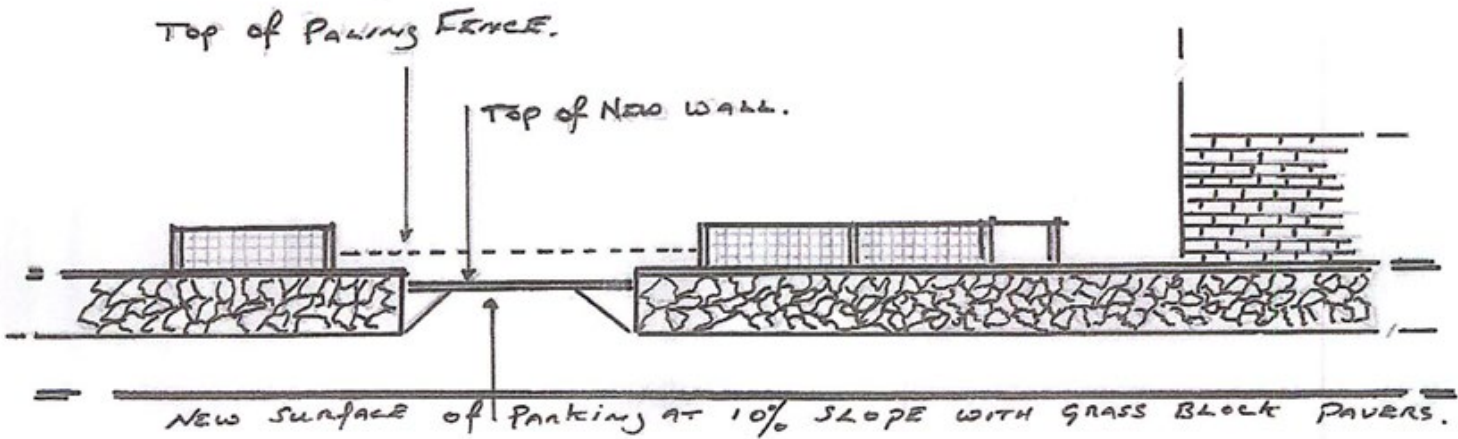
[Previous](#)

[Next](#)

[Home](#)



Existing Elevation

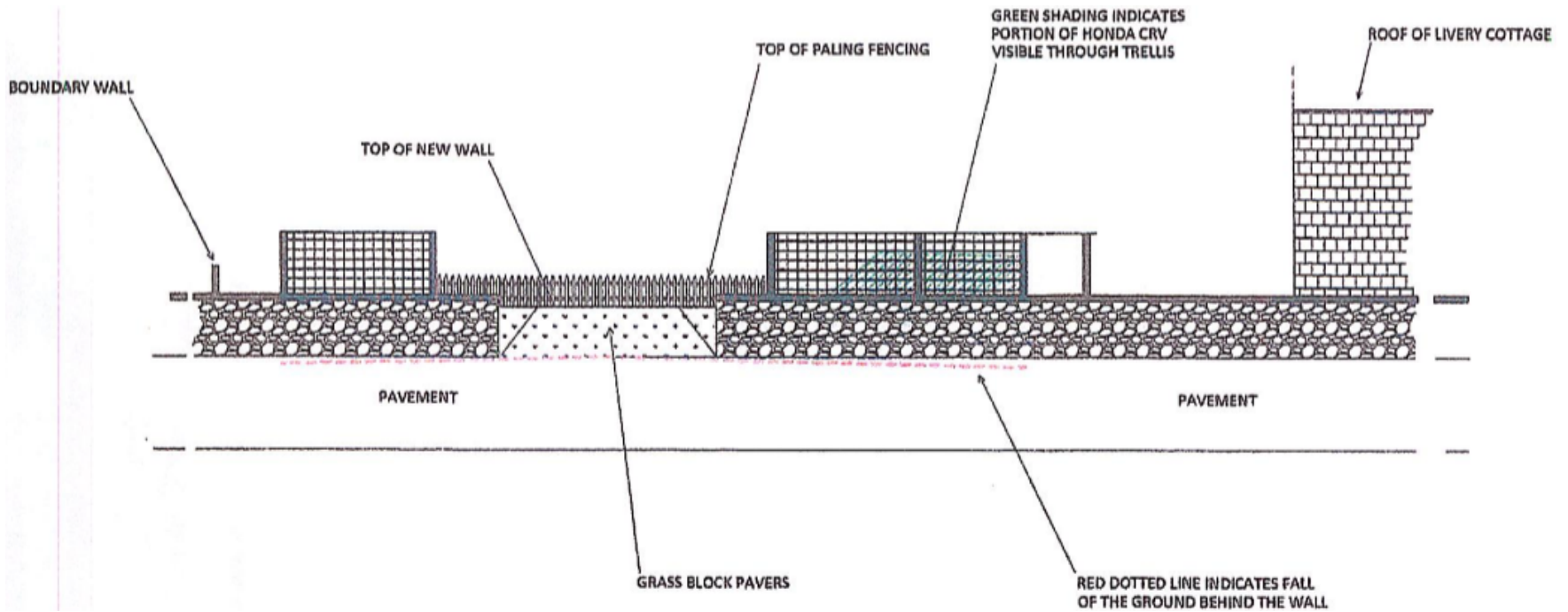


Proposed Elevation

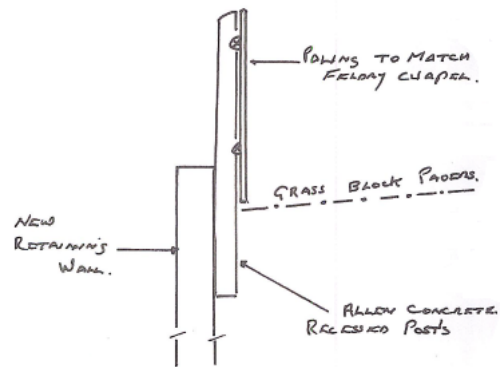
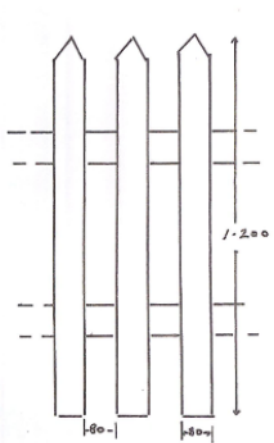
[Previous](#)

[Next](#)

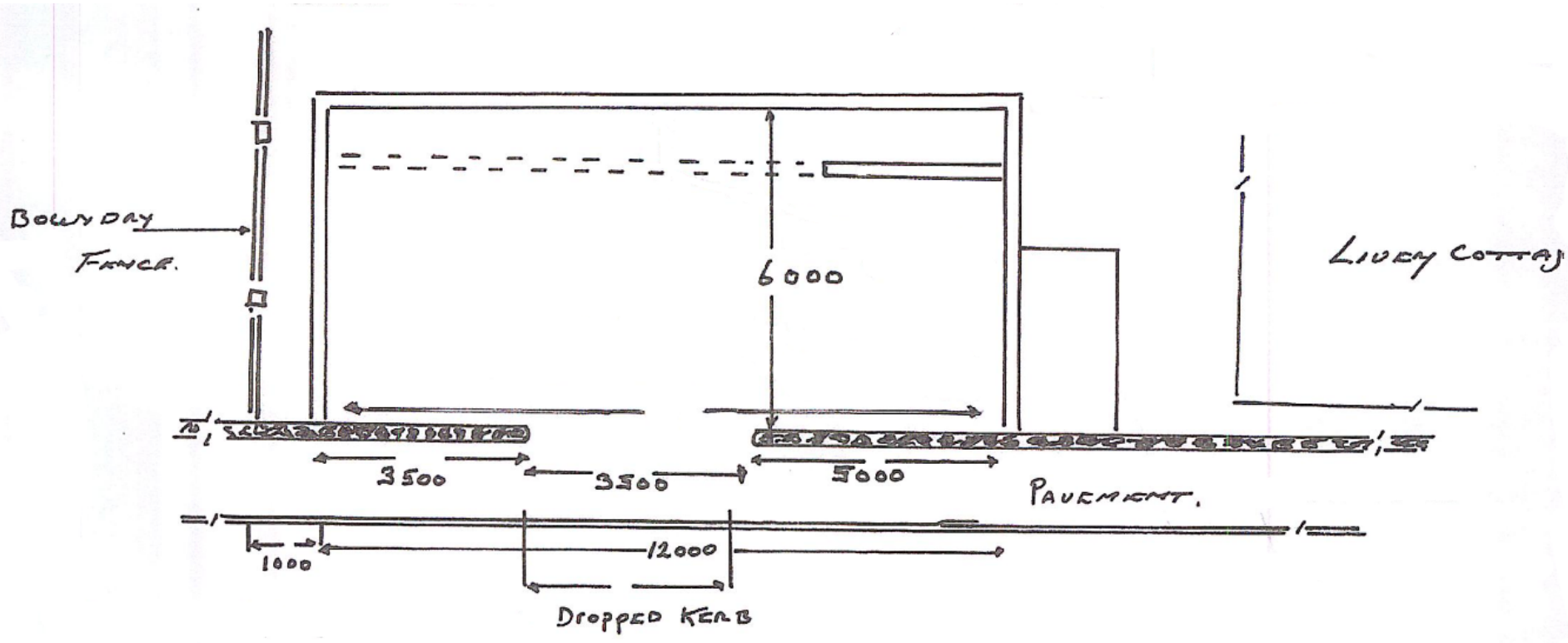
[Home](#)



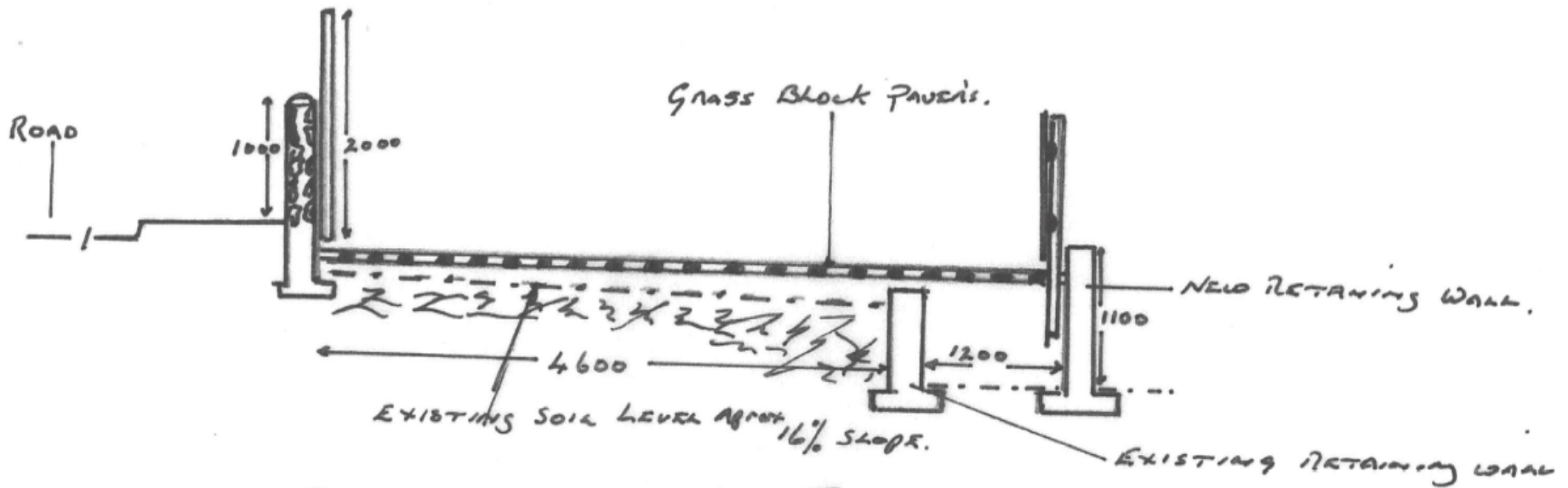
Detailed proposed elevation



Proposed paling fence elevations



Proposed parking area plan

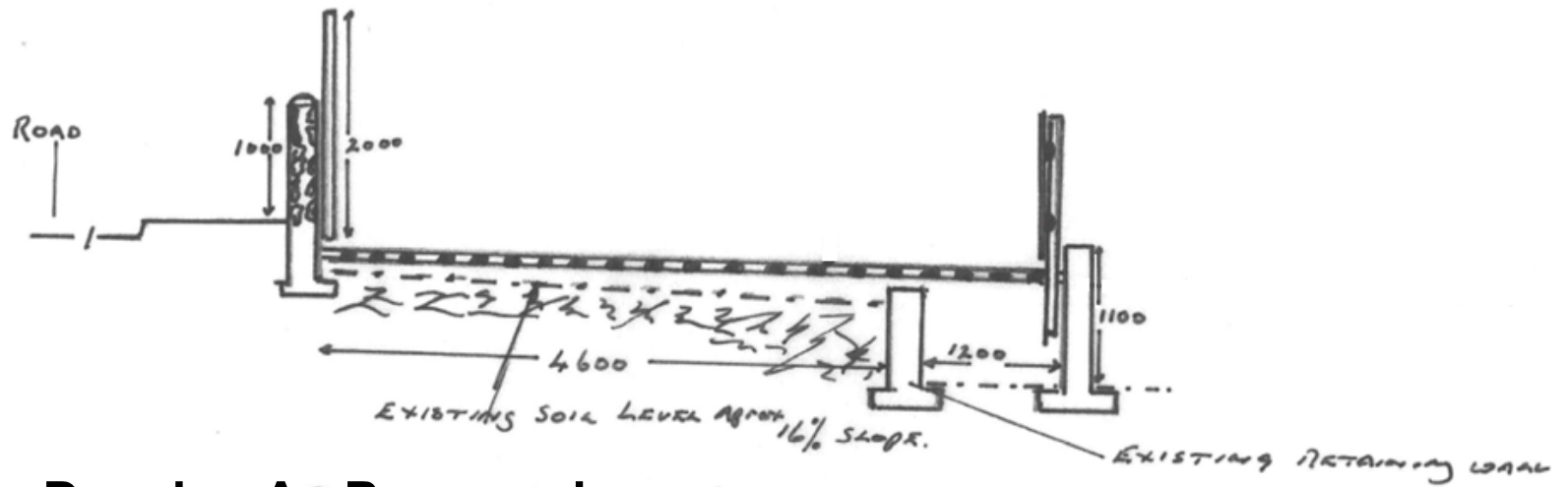


Proposed parking area section

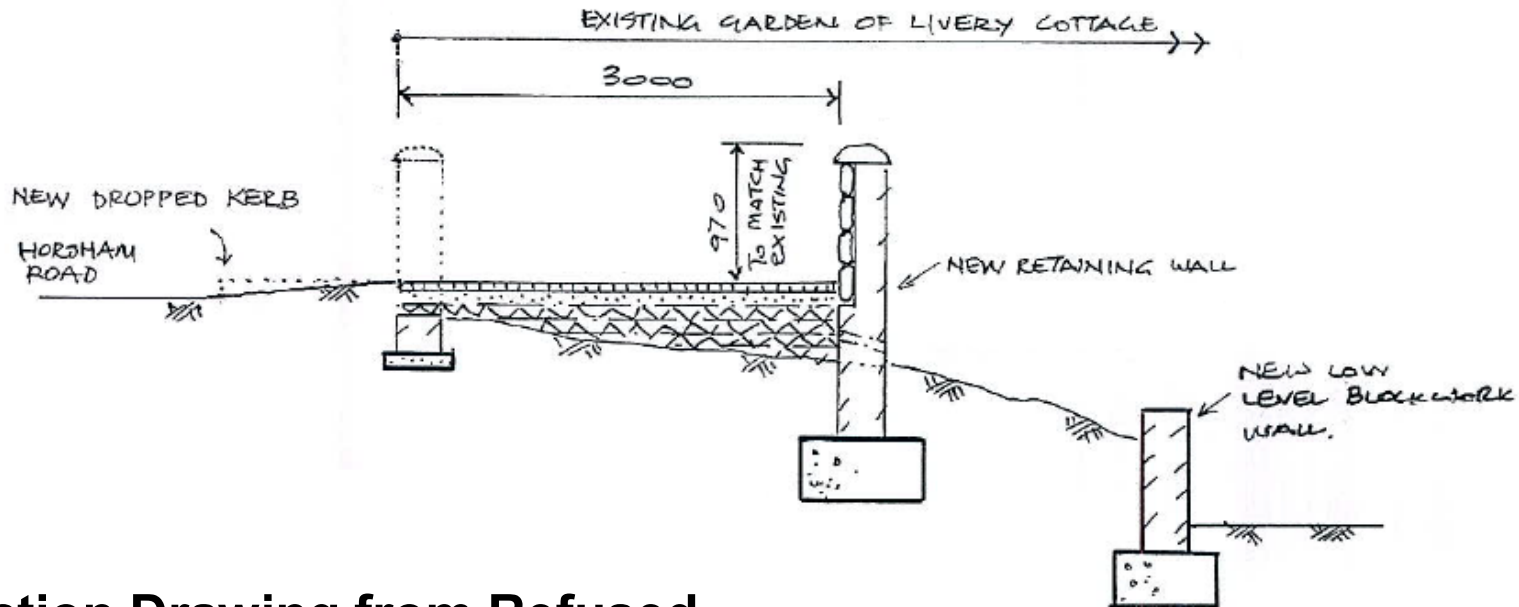
Previous

Next

Home



Section Drawing As Proposed



Section Drawing from Refused Application 18/P/02358



[Previous](#)

[Next](#)

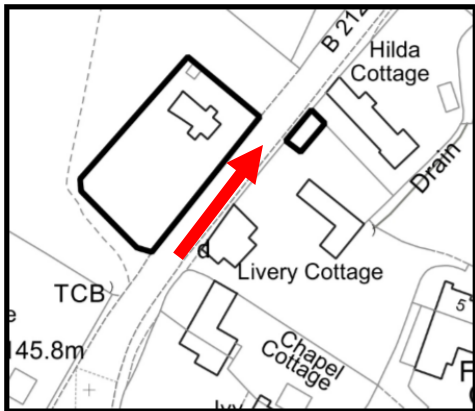
[Home](#)



[Previous](#)

[Next](#)

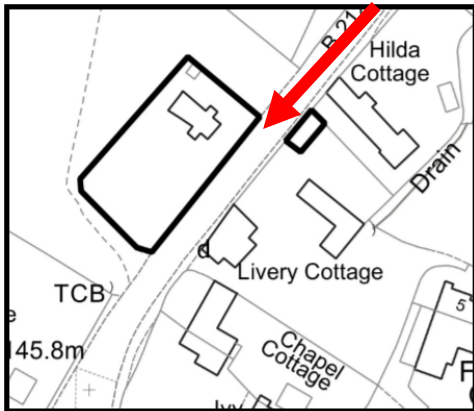
[Home](#)



[Previous](#)

[Next](#)

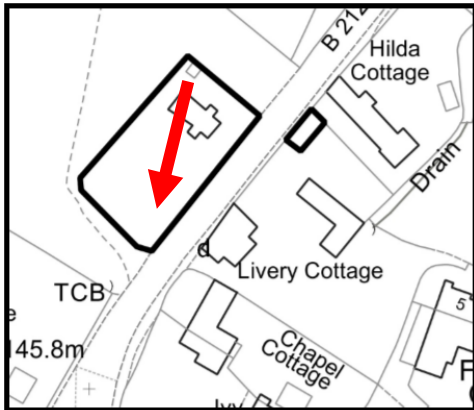
[Home](#)



[Previous](#)

[Next](#)

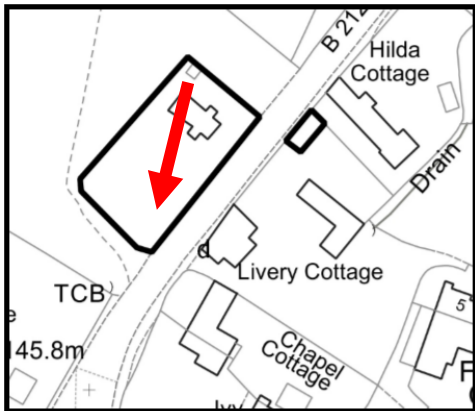
[Home](#)



[Previous](#)

[Next](#)

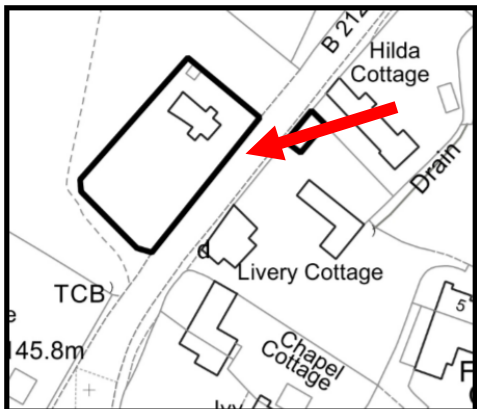
[Home](#)



[Previous](#)

[Next](#)

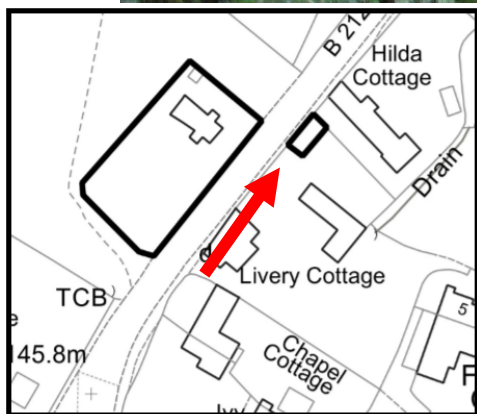
[Home](#)



[Previous](#)

[Next](#)

[Home](#)



[Previous](#)

[Next](#)

[Home](#)

[Previous](#)

[Next](#)

[Home](#)

This page is intentionally left blank

20/P/00045

**9 Greenside Close
Guildford
GU4 7EU**

[Previous](#)

[Next](#)

[Home](#)

20/P/00045 - 9 Greenside Close, Guildford



© Crown Copyright 2020, Guildford Borough Council.
Licence No. 100019625.

This map is for identification purposes only and should
not be relied upon for accuracy.

Print Date: 11/03/2020



Not to Scale





Site layout

[Previous](#)

[Next](#)

[Home](#)

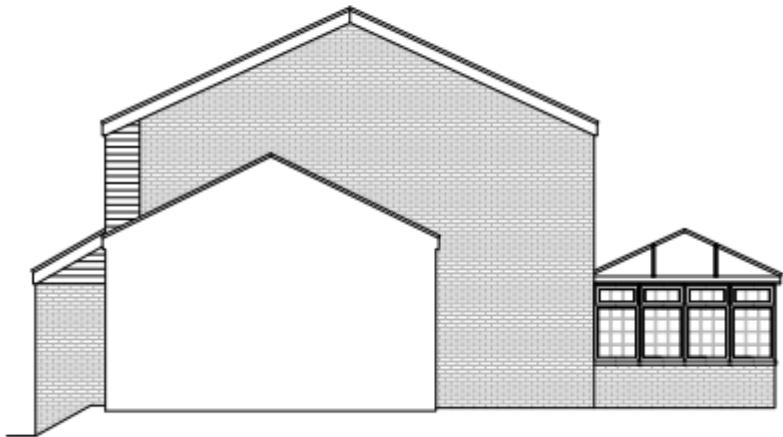


FRONT

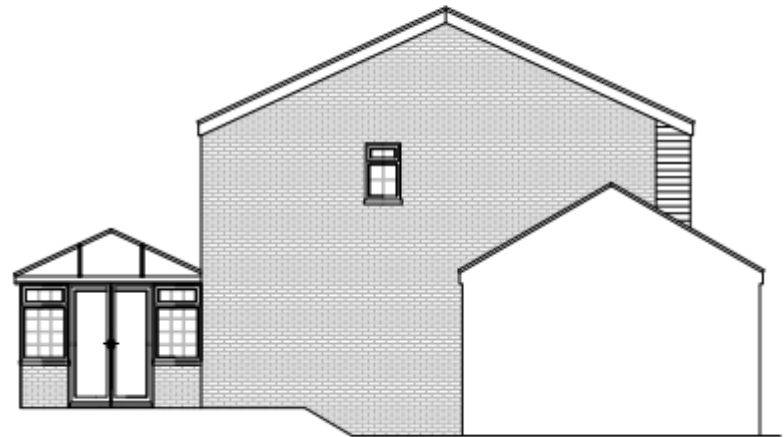


REAR

EXISTING ELEVATIONS
scale 1:100



SIDE



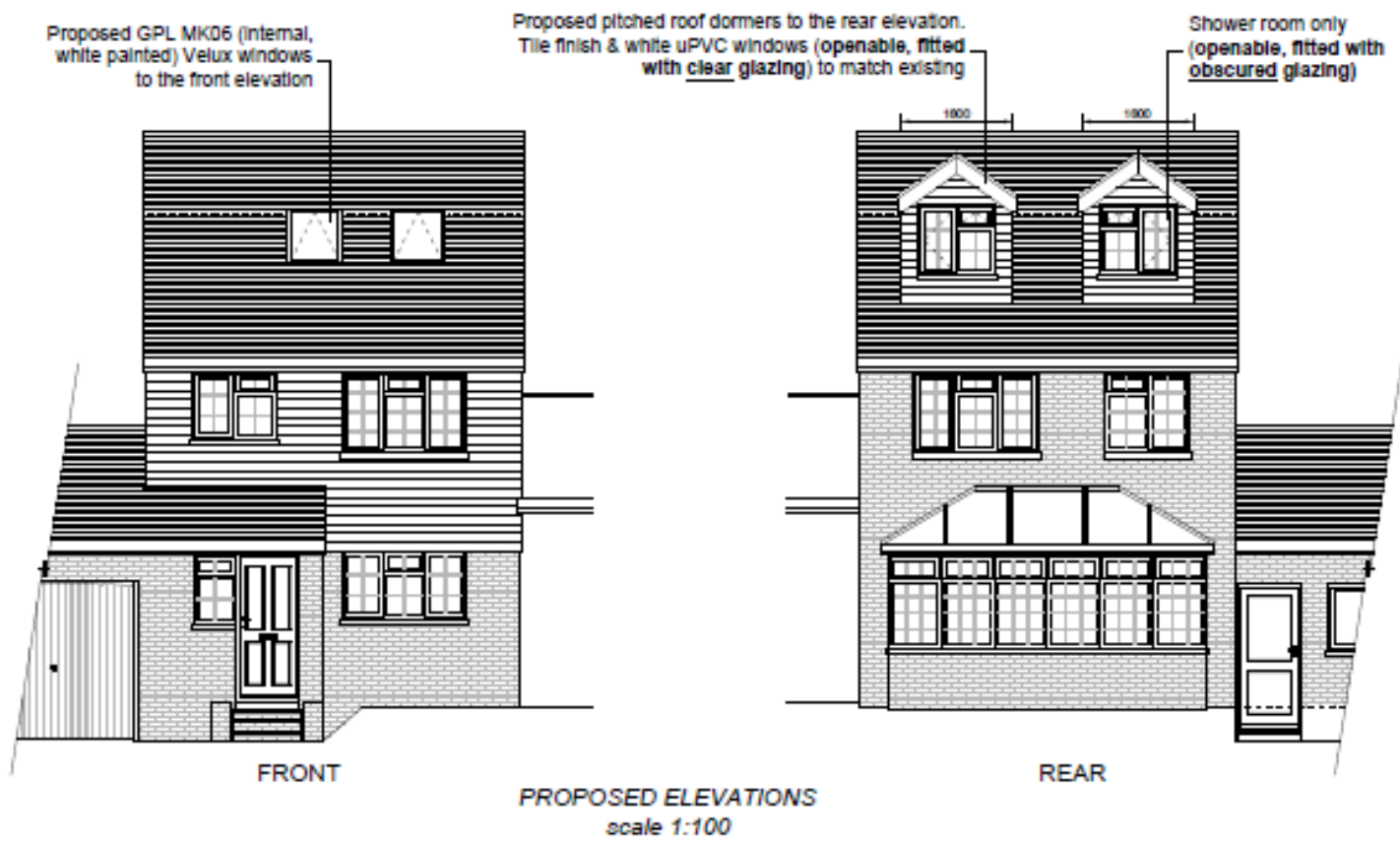
SIDE

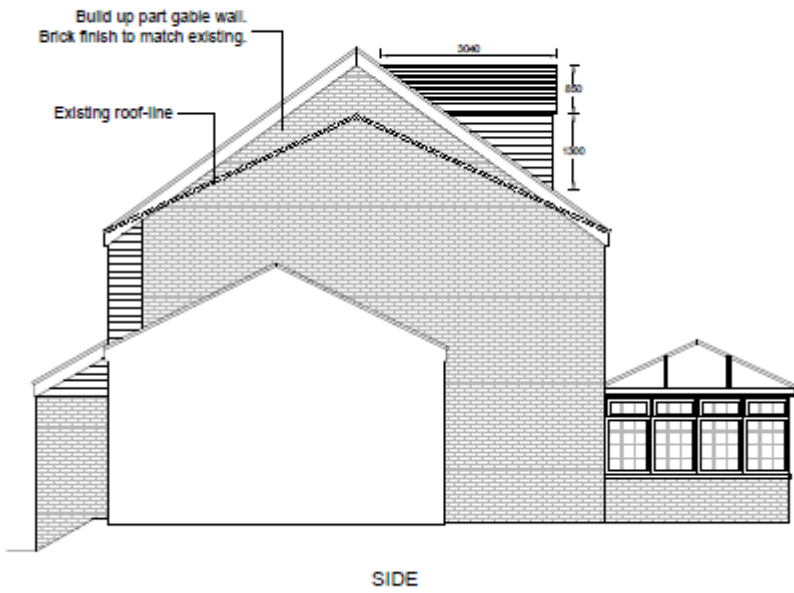
Existing sides

[Previous](#)

[Next](#)

[Home](#)





Proposed sides

Previous

Next

Home



[Previous](#)

[Next](#)

[Home](#)



[Previous](#)

[Next](#)

[Home](#)



[Previous](#)

[Next](#)

[Home](#)



[Previous](#)

[Next](#)

[Home](#)

This page is intentionally left blank

20/P/00176

Pit Farm Tennis Club

Hillier Road

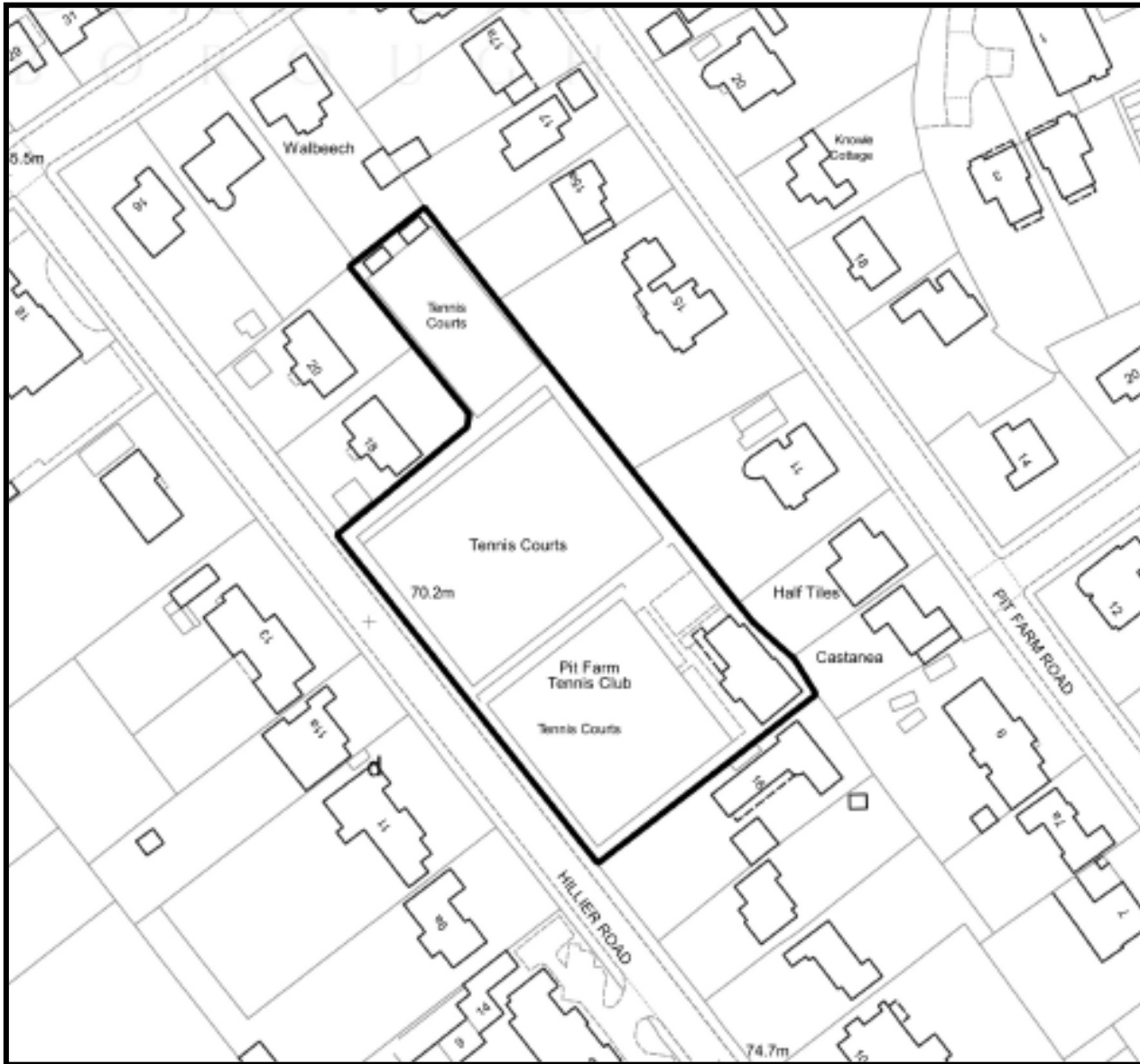
Guildford

GU1 2JQ

[Previous](#)

[Next](#)

[Home](#)

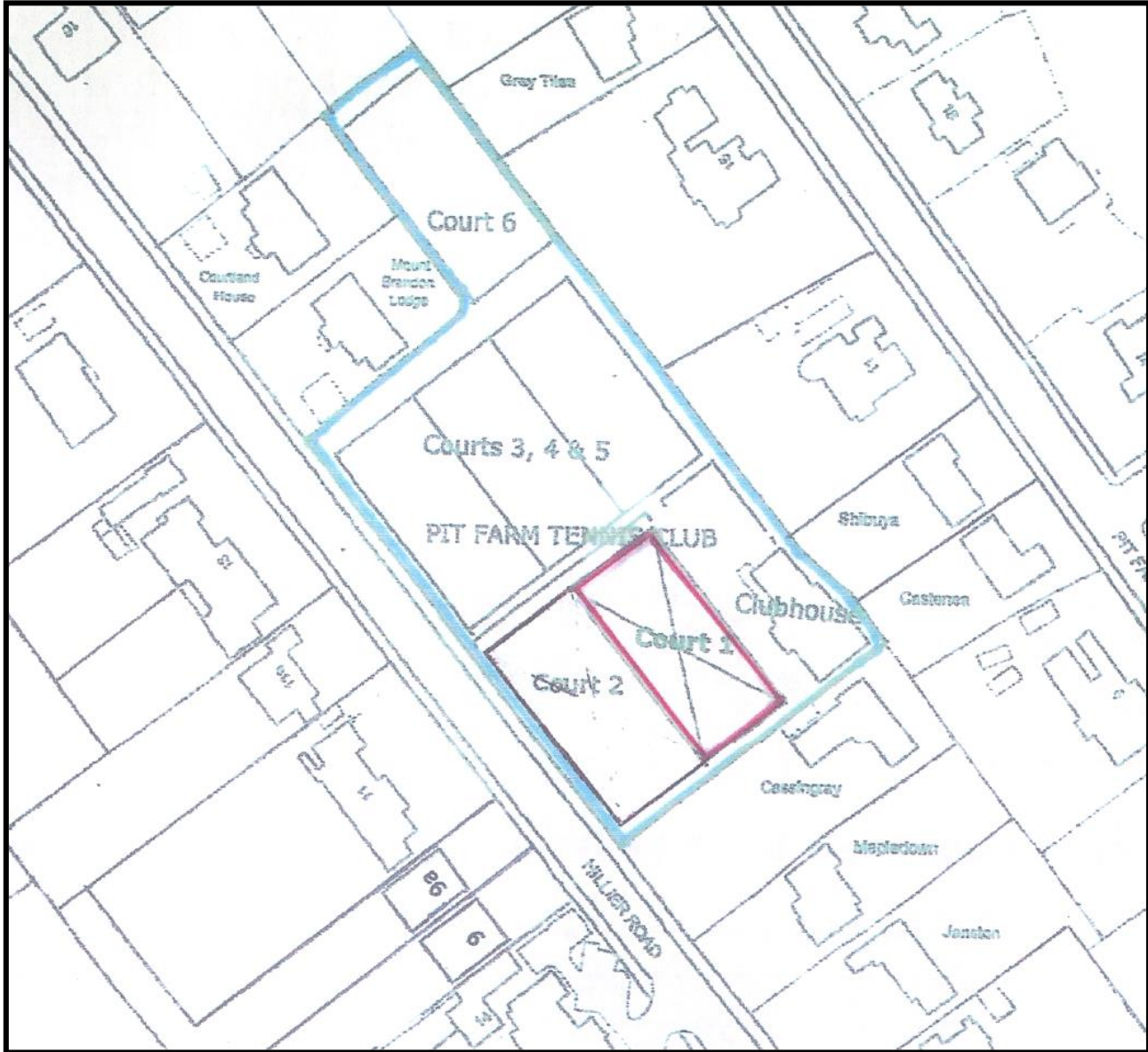


Location Plan

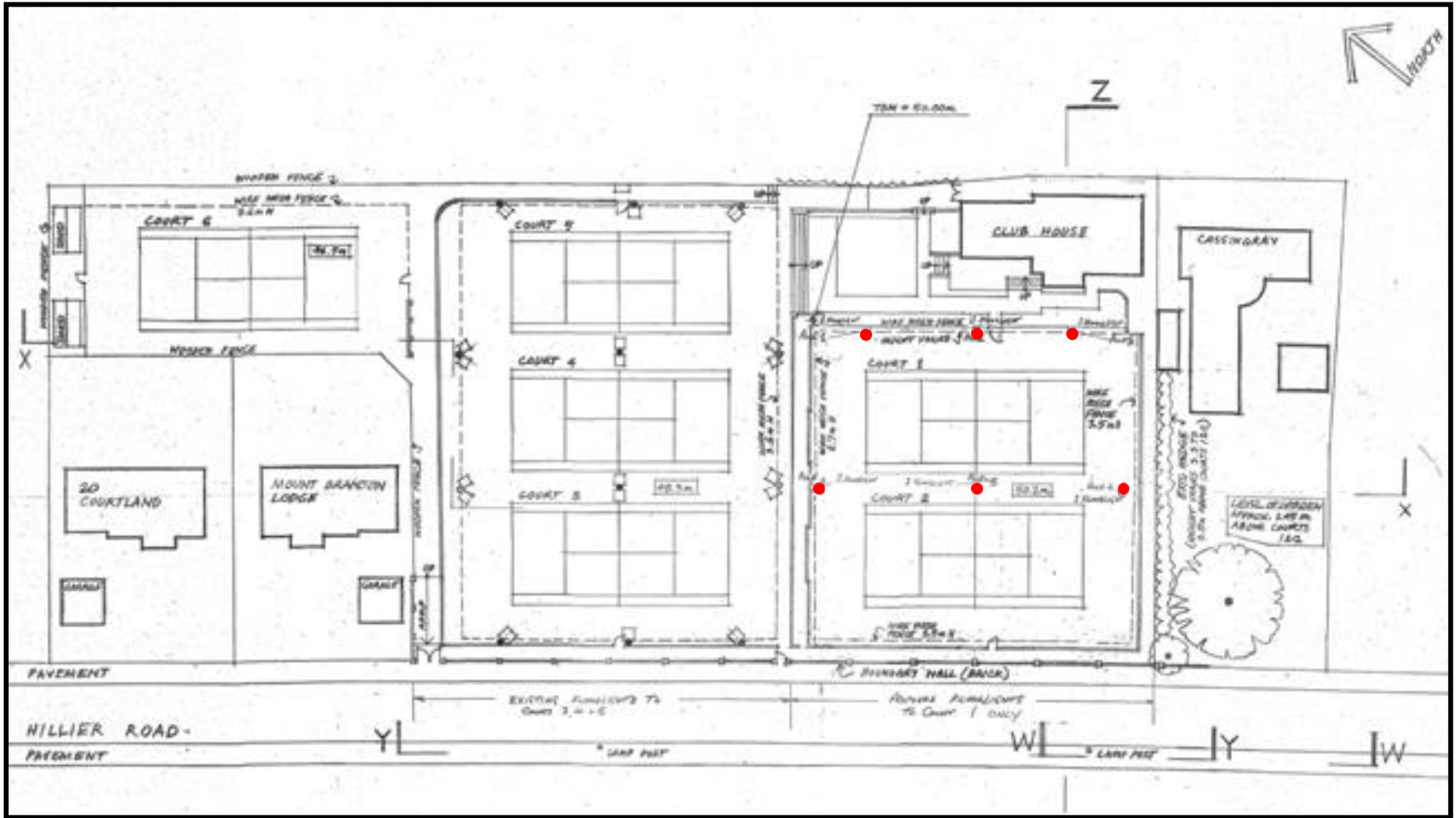
[Previous](#)

[Next](#)

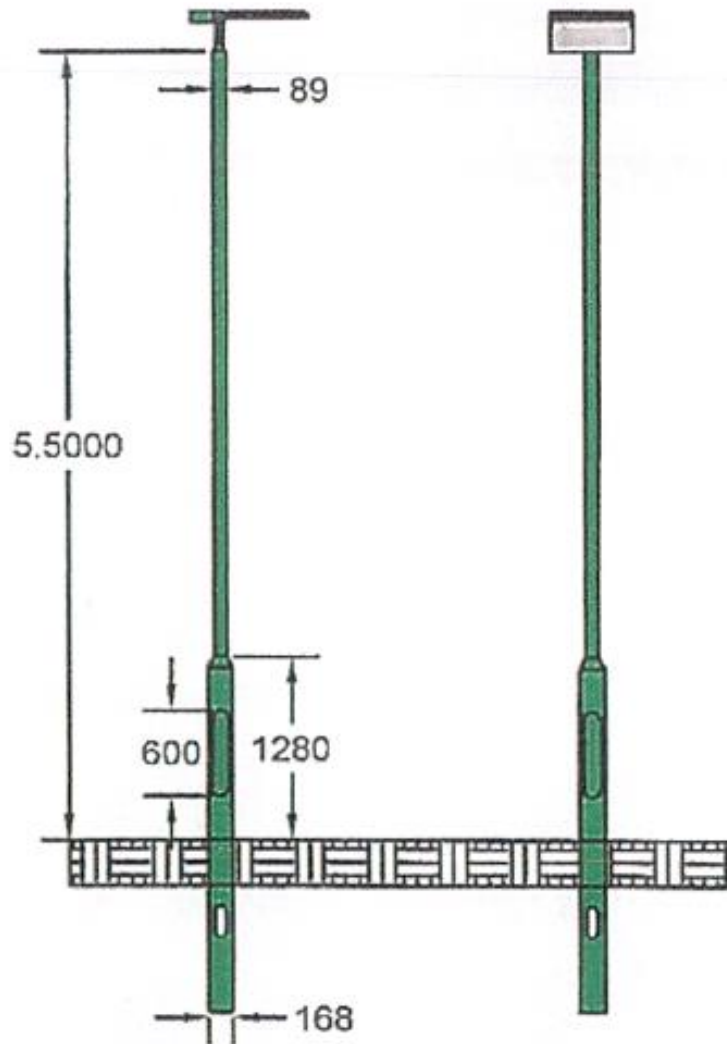
[Home](#)



Location of court 1



Proposed Block Plan

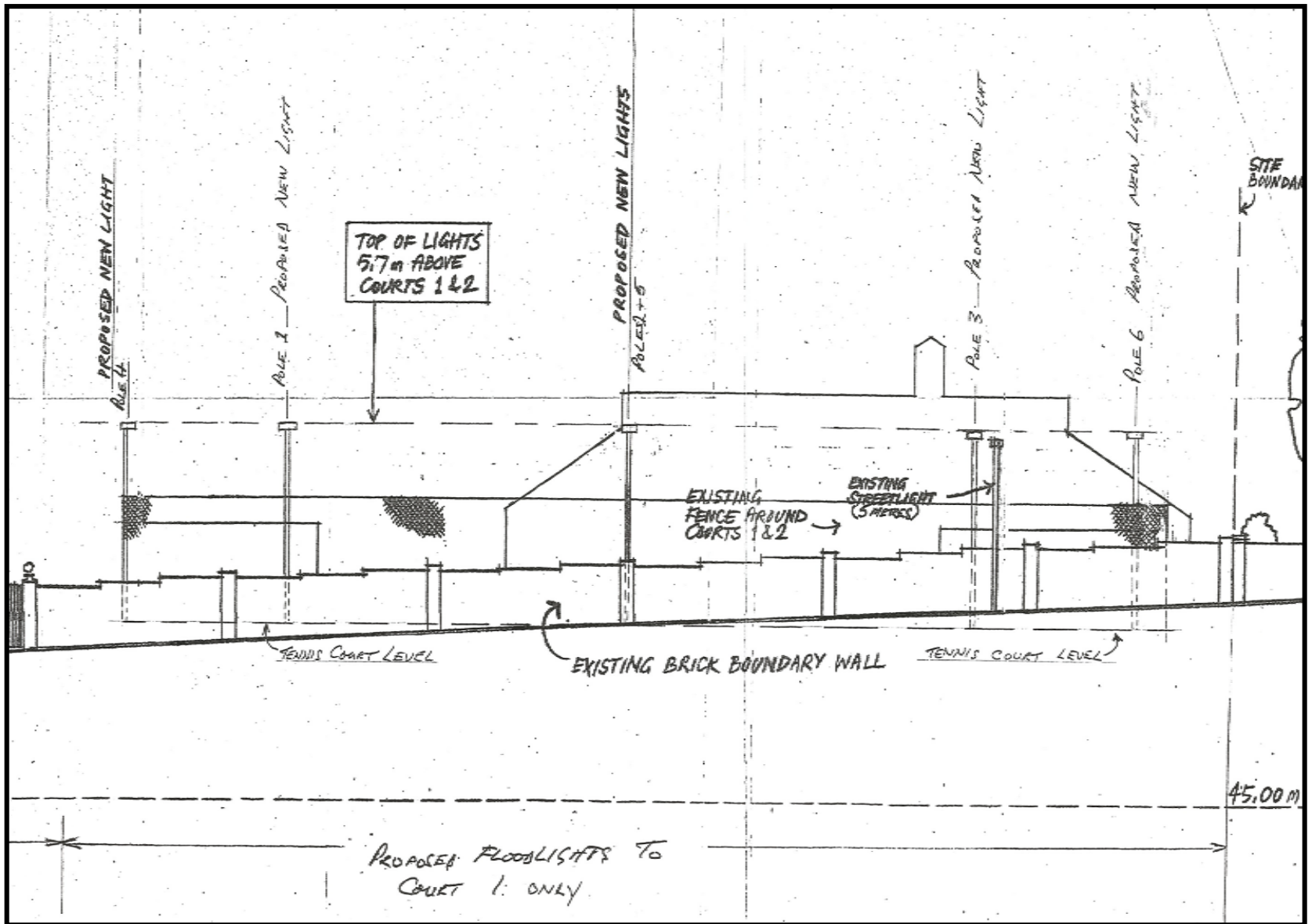


Proposed Elevations

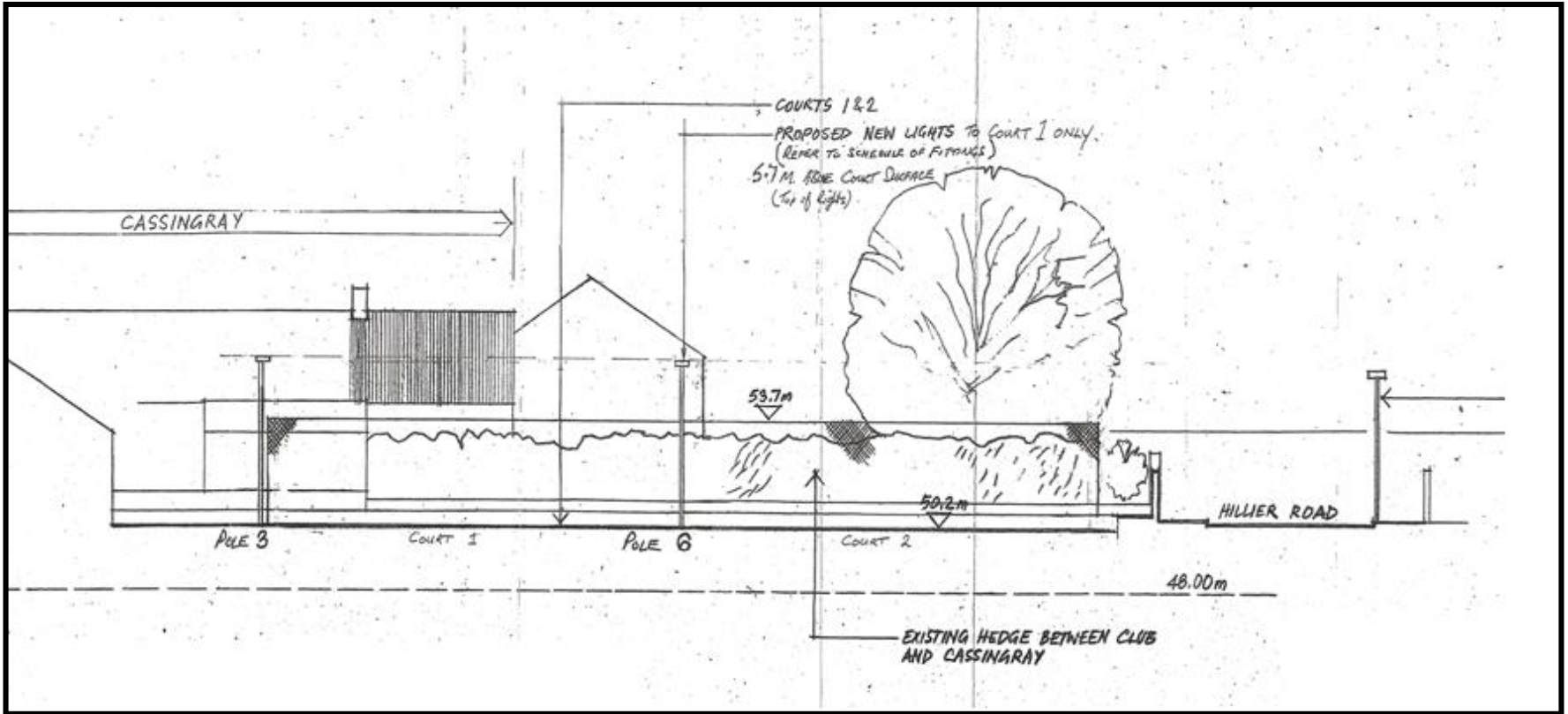
Previous

Next

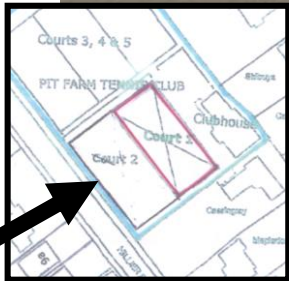
Home



Front Elevation (facing onto Hillier Road)



Proposed Section looking south east

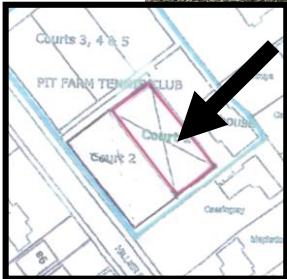


View looking toward the clubhouse (north east)

[Previous](#)

[Next](#)

[Home](#)

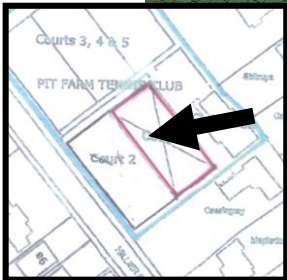


View looking toward Hillier Road (court 1 in foreground)

[Previous](#)

[Next](#)

[Home](#)

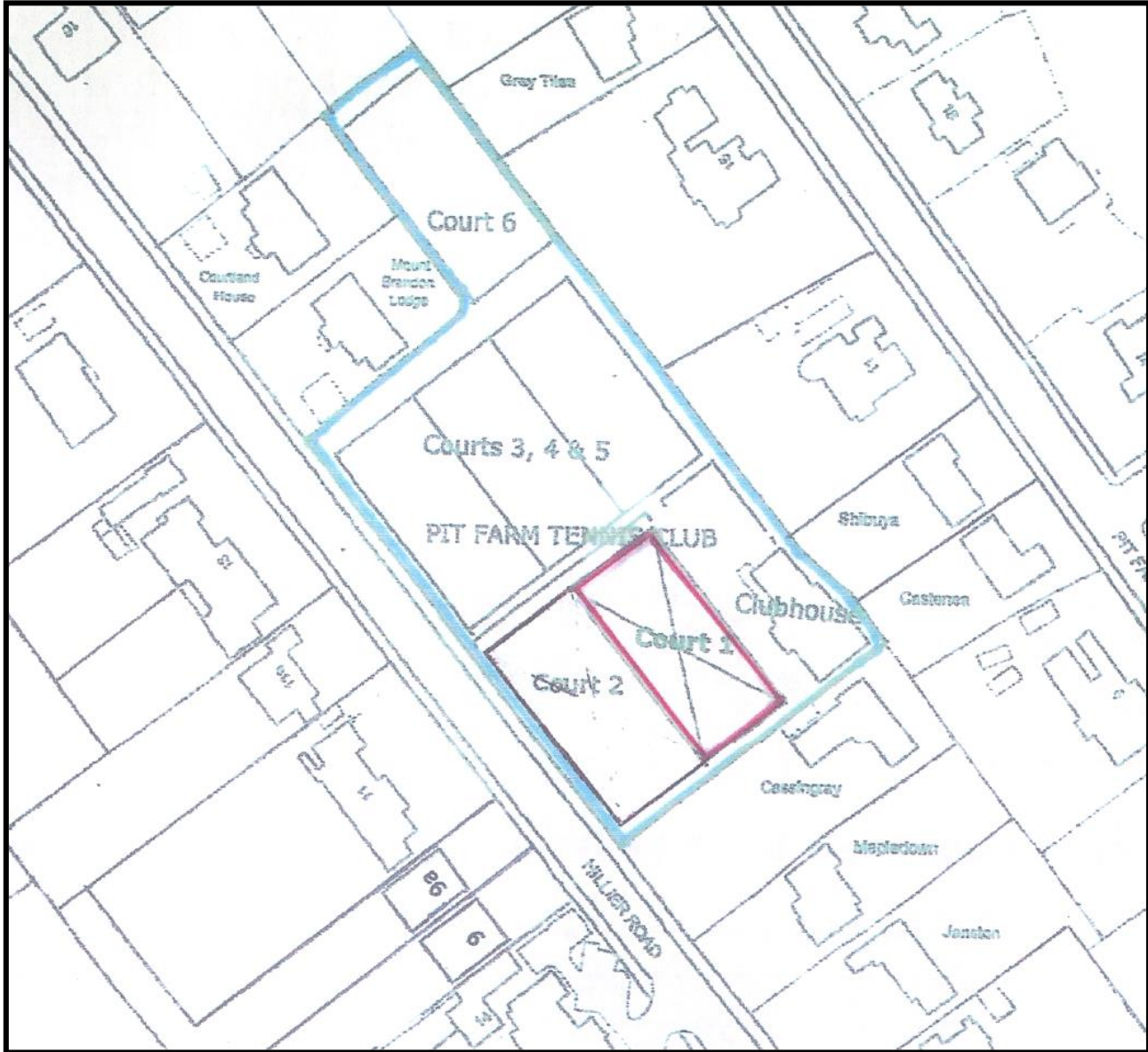


View looking westward (court 1 in foreground)

[Previous](#)

[Next](#)

[Home](#)



Location of court 1

This page is intentionally left blank

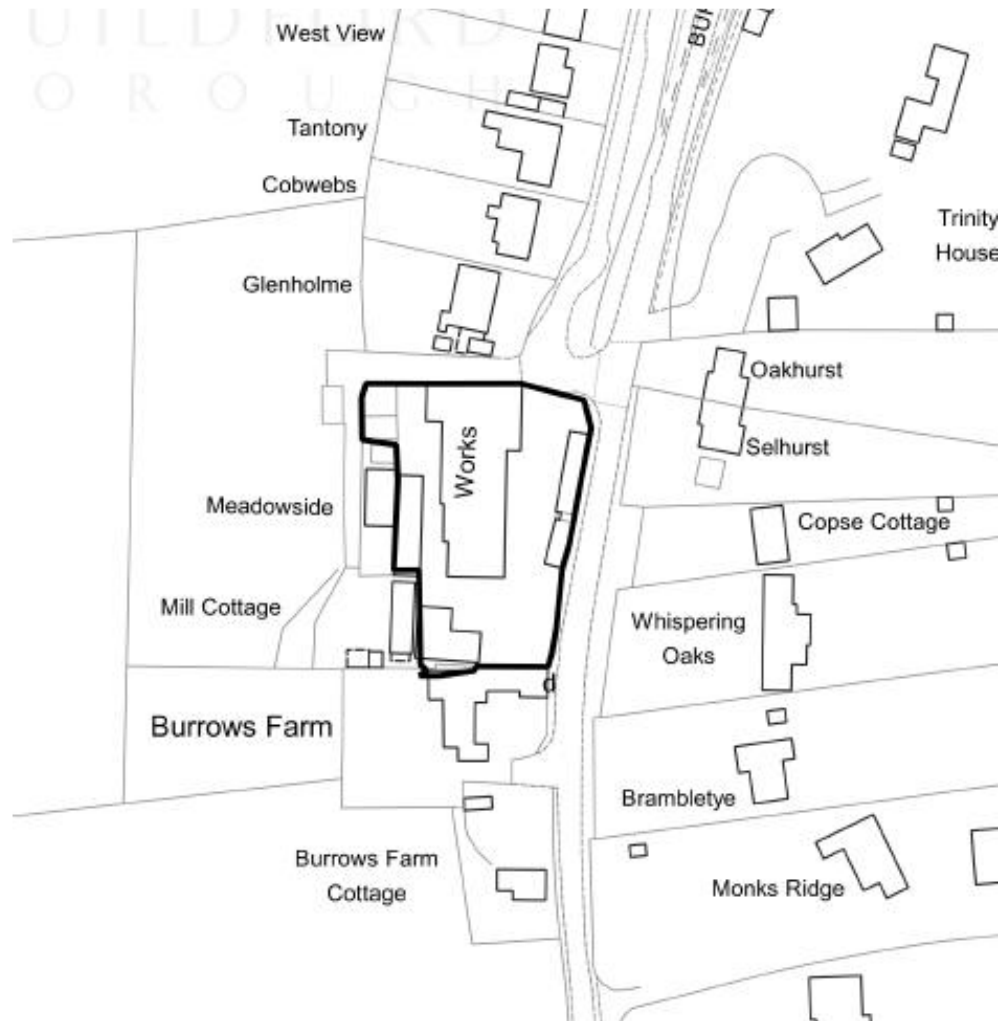
20/P/00309

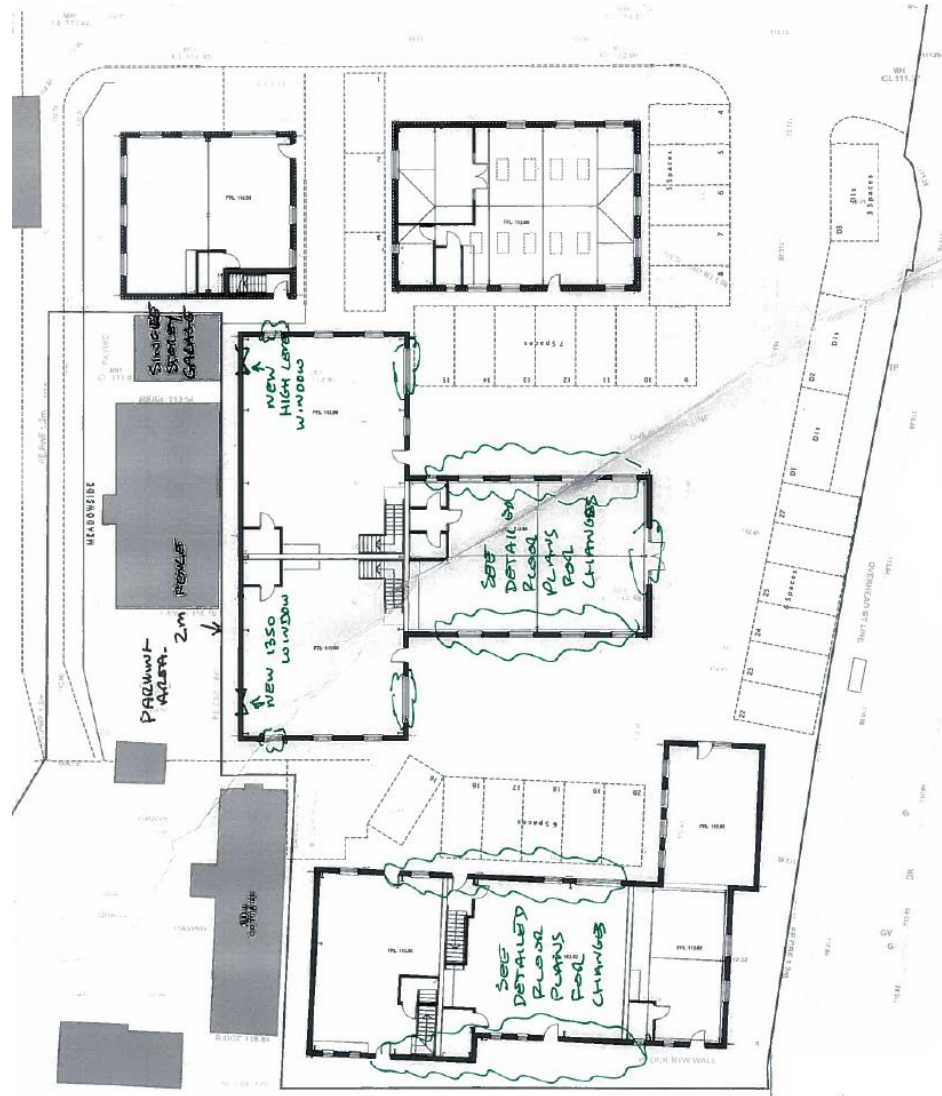
**King's Yard
Burrows Lane
Shere
Guildford**

[Previous](#)

[Next](#)

[Home](#)



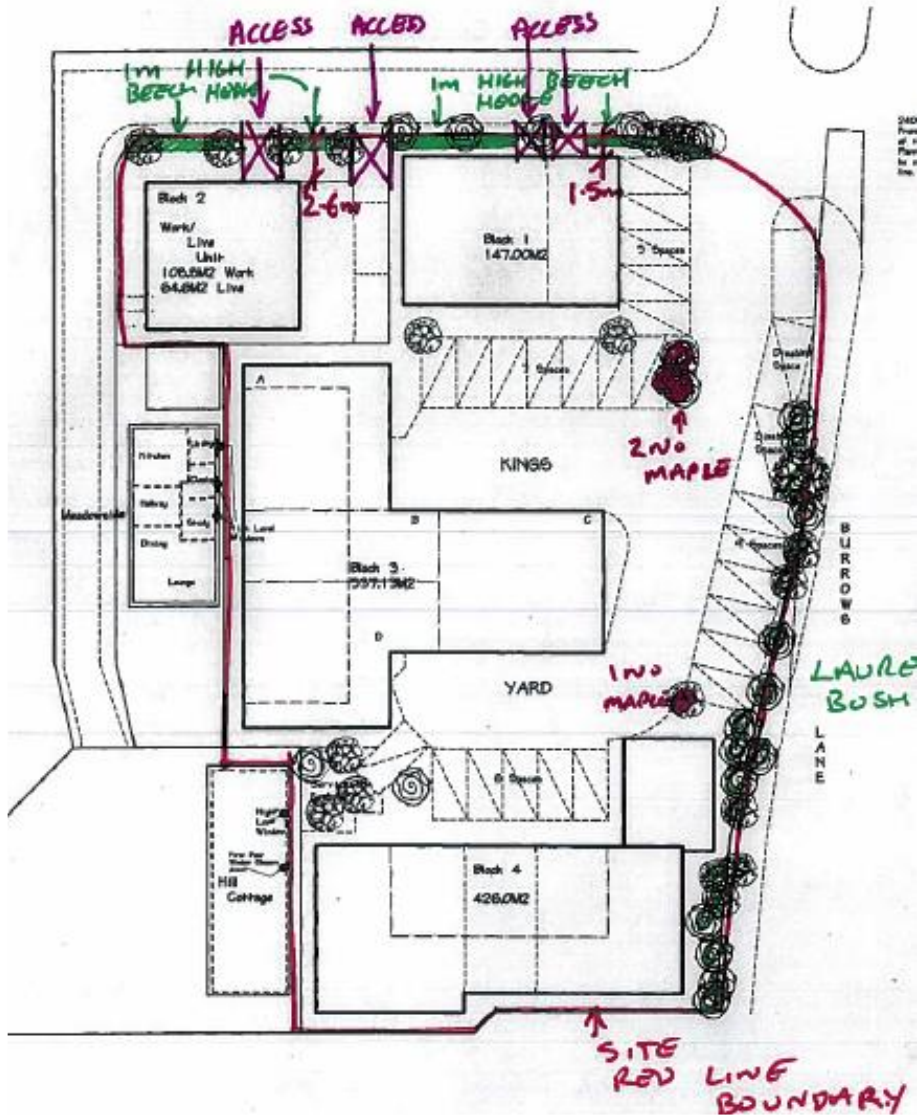


Block plan

[Previous](#)

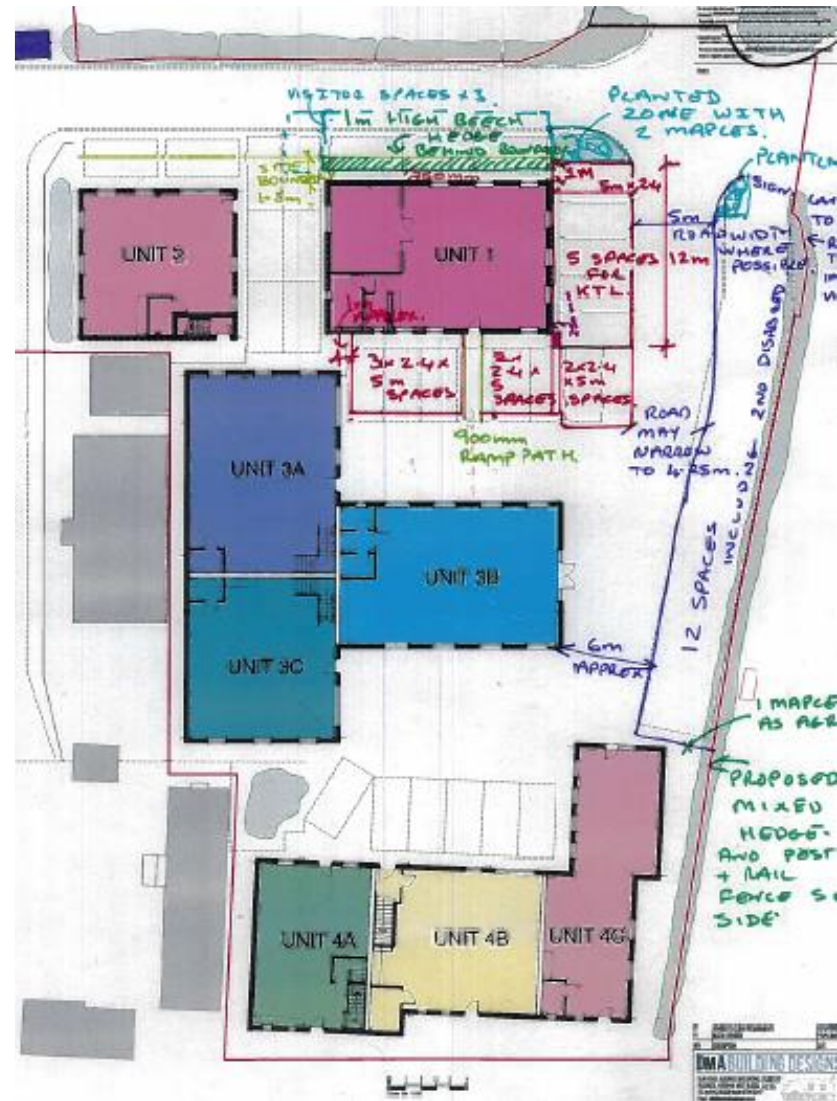
[Next](#)

[Home](#)

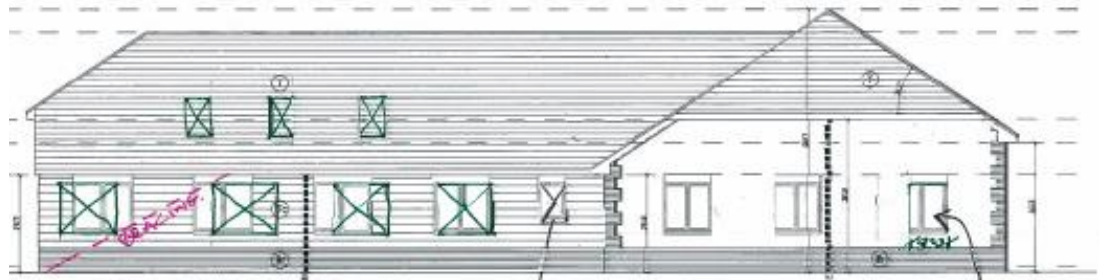


Consented

Landscape plans



Proposed

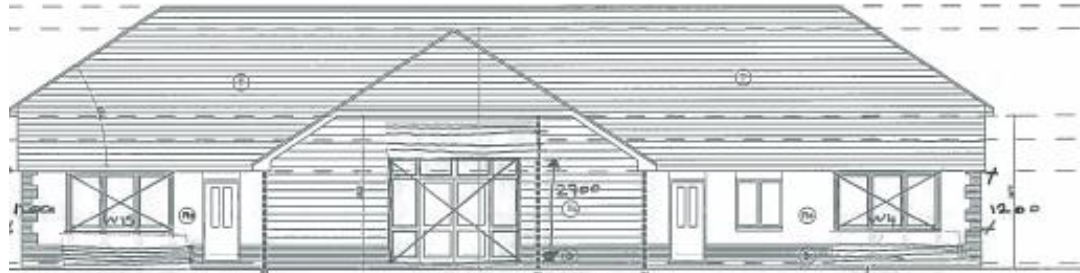


ALL 1500mm WINDOWS
RESIZED @ 1350mm AND
RE ARRANGED TO SUIT
INTERNAL DIAGONAL
BRACING.

NORTH ELEVATION
SCALE: 1:50

OMIT FOR
FIRE REASONS

REDUCE WIN
TO 830x12
(W)
FOR FIRE



CHANGE WINDOWS TO
1.2m HIGH BY 2.7m WIDE

REDUCE WINDOW
HEIGHT TO 2.900mm
TO REDUCE LIGHT
SPILLAGE AND IMPROVE
INSULATION.

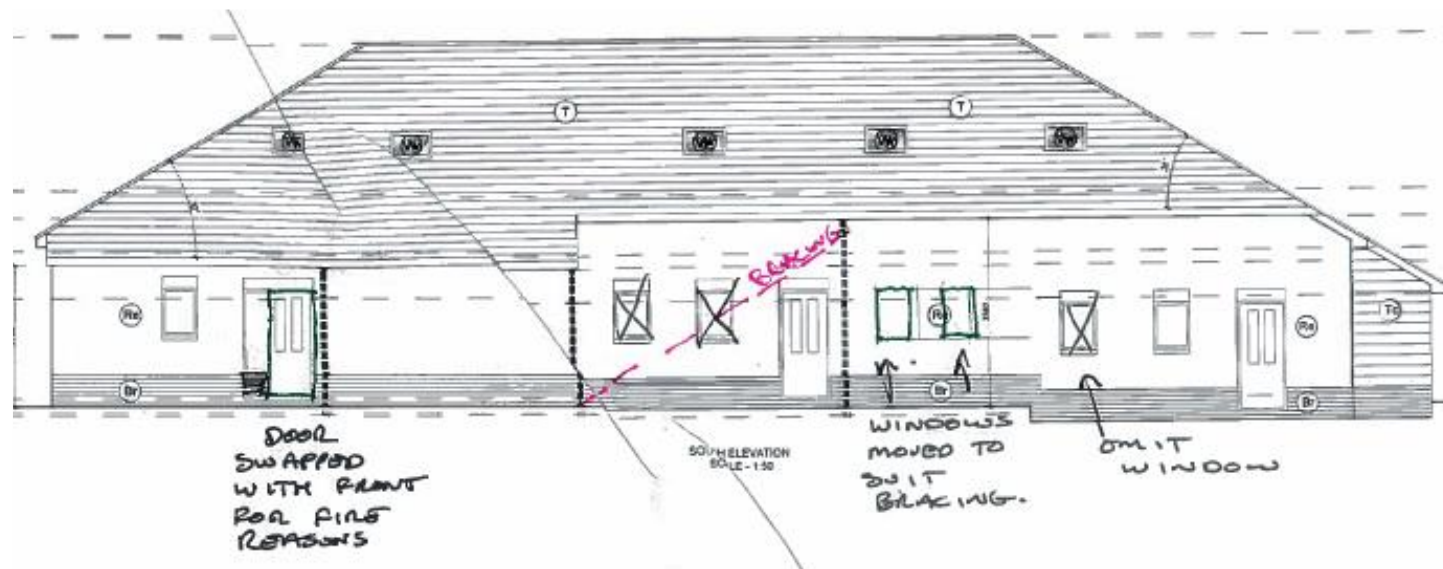
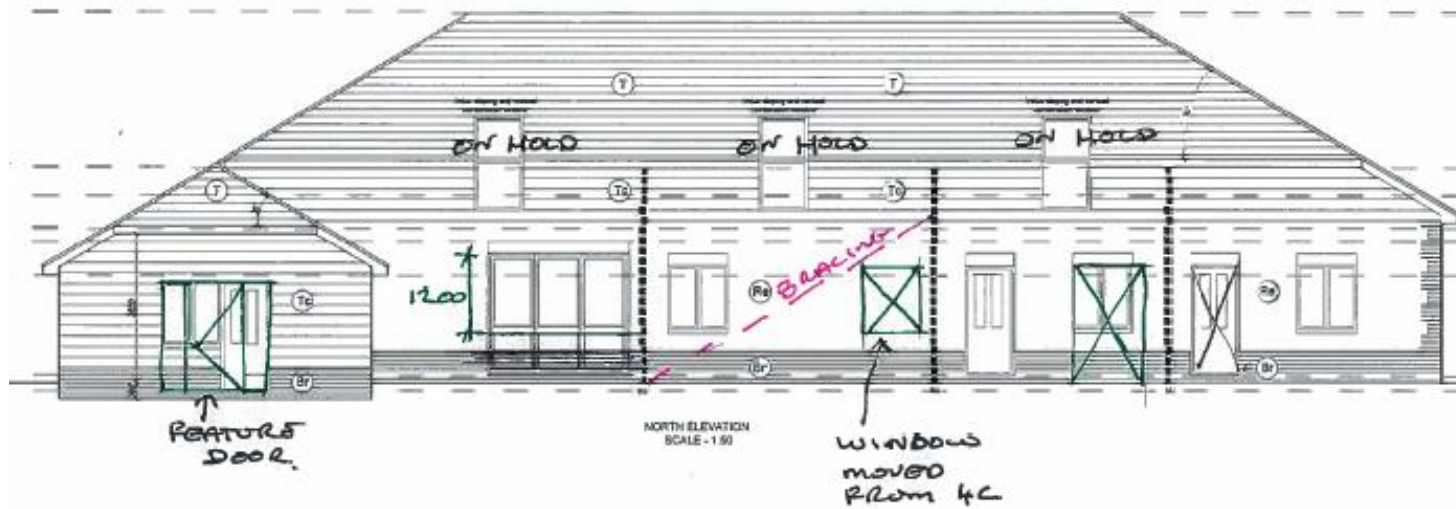
CHANGE WINDOWS
TO 1.2m HIGH X 2

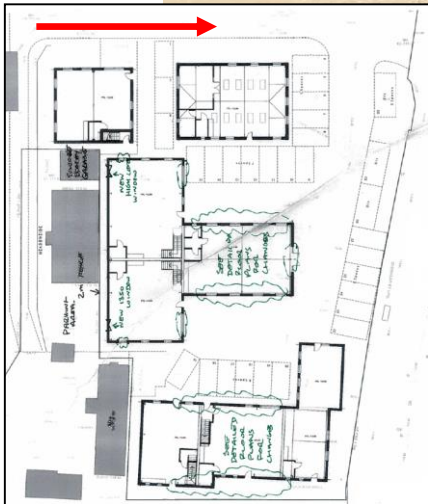


CLEAR
GLASS WINDOWS
2000x500 HIGH

NORTH ELEVATION
SCALE: 1:50

WINDOW
1350x1200 HIGH
LOWER SECTION 0850
TOP SECTION 1200

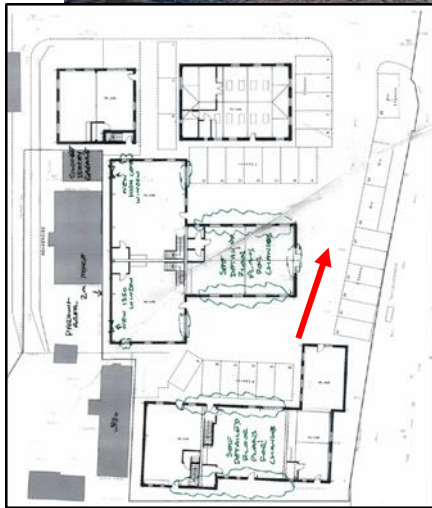




[Previous](#)

[Next](#)

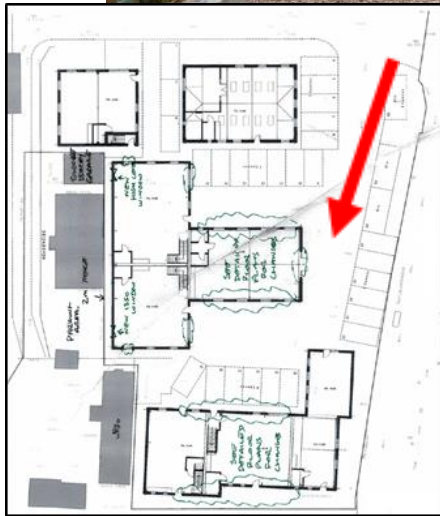
[Home](#)



[Previous](#)

[Next](#)

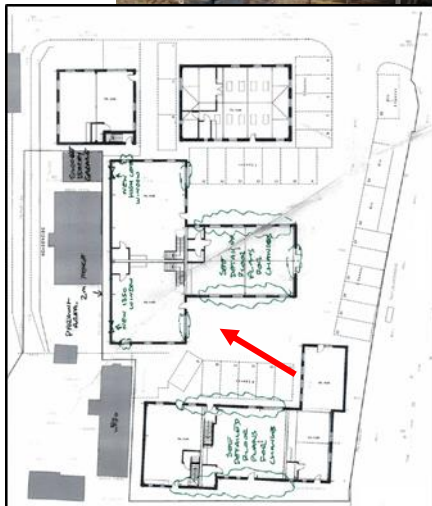
[Home](#)



[Previous](#)

[Next](#)

[Home](#)



[Previous](#)

[Next](#)

[Home](#)

20/P/00478

**Aldershot Road Allotments,
Woodside Road, Guildford**

[Previous](#)

[Next](#)

[Home](#)



Site Plan

Previous

Next

Home

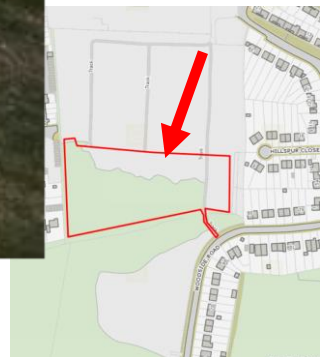


Aerial photo

[Previous](#)

[Next](#)

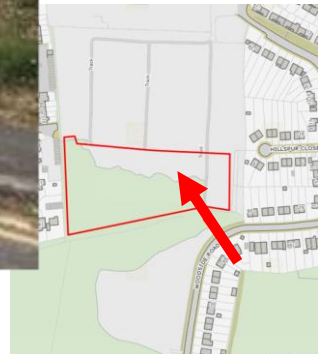
[Home](#)



[Previous](#)

[Next](#)

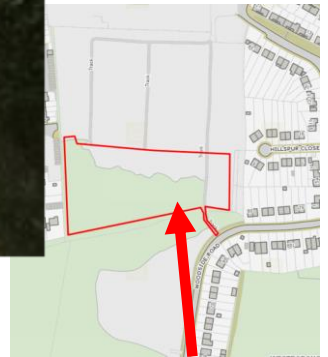
[Home](#)



[Previous](#)

[Next](#)

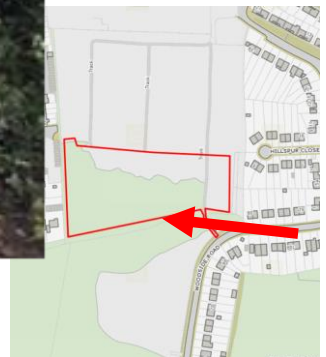
[Home](#)



[Previous](#)

[Next](#)

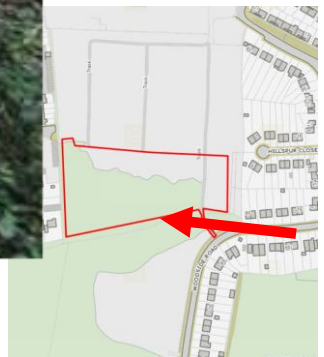
[Home](#)



[Previous](#)

[Next](#)

[Home](#)



[Previous](#)

[Next](#)

[Home](#)



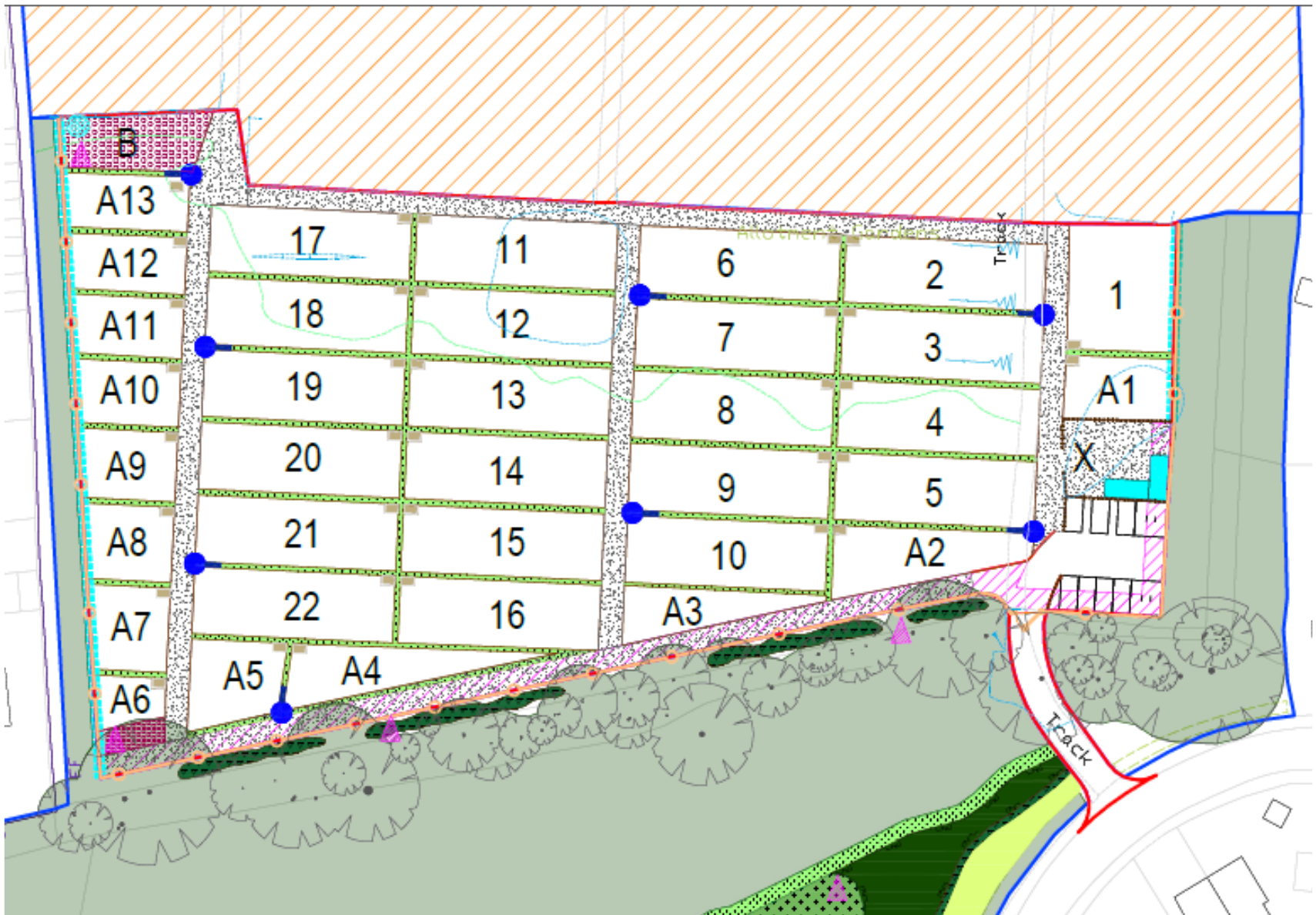
1950s



1998



2018

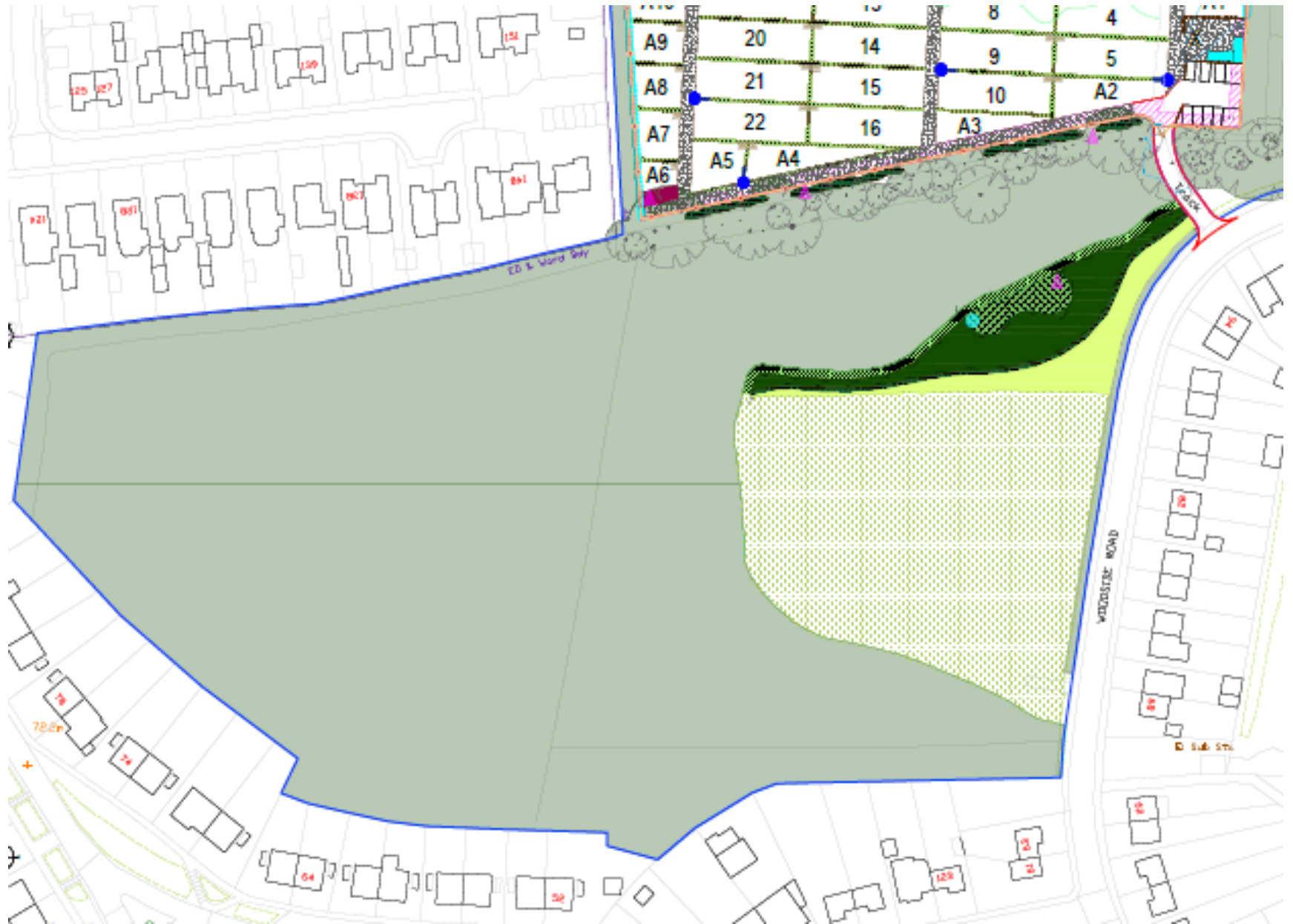


Proposed site layout plan

[Previous](#)

[Next](#)

[Home](#)



Mitigation planting

Previous

Next

Home



Aerial photo

[Previous](#)

[Next](#)

[Home](#)

[Previous](#)

[Next](#)

[Home](#)

END

[Previous](#)

[Next](#)

[Home](#)